

JLU

NEUE WEGE. SEIT 1607.

JUSTUS-LIEBIG-
UNIVERSITÄT
GIESSEN

ACTIVITY REPORT 2021-2023

PANEL ON PLANETARY THINKING

RESEARCH-ORIENTED THINK TANK AT JUSTUS LIEBIG UNIVERSITY GIESSEN



planetary
thinking

CONTENTS

1. Overview	5
2. Core Managing Team	8
3. History & Mission	10
4. Activities	11
4.1 International Fellowship Program	11
4.2 Art Projects	27
4.3 Planetary Futures Competition	40
4.4 Scientific Outreach	42
4.5 Excursions	50
4.6 Forthcoming Events	58
5. Publications	60
6. Panel in the Media.....	66

The Panel on Planetary Thinking was founded in 2020 as a research-oriented think tank at Justus Liebig University Giessen, Germany. Initially funded by the German Research Foundation (DFG) until 2025, it received additional funding by the Hessian Ministry of Higher Education, Research, Science and the Arts from 2022-2025. It constitutes a central organizational unit in the field of sustainability within the university's development plan until 2030.

The Panel conducts transdisciplinary scientific research on planetary thinking, a novel approach that moves away from anthropocentrism and conceptions around the 'globe'. This booklet gives an overview of the range of activities the Panel carries out, which include an international fellowship program, a range of scientific outreach formats, workshops, and exhibitions. Furthermore, the Panel provides seed funds for emerging third-party funding projects.

Planetary thinking means to acknowledge that human societies are deeply entangled with the life of an ever-changing planet—a planet that expands spatially from the Earth's core to interplanetary space, temporally from nanoseconds to geologic time scales, and materially from elementary particles to the dark matter of the universe.



North Africa and Europe from the satellite Suomi NPP © NASA

WORLD - EARTH - GLOBE?

PLANET


There are many ways to talk about planet Earth; as Earth, world, or globe. All these types of descriptions focus on different properties:

When we speak of the Earth, we often mean its biological or geological description. We understand them as the physical basis of human life.

The world, on the other hand, forms a political stage and a cultural space. This is based on ideas of cosmopolitanism and thus of a universal moral order.

The understanding of the globe is shaped by ideals of control and regulation, as well as notions of economic unification.

These concepts contain assumptions that hide important connections from view.



A fourth dimension is therefore important in planetary thinking: the planet should “overwrite” the globe.

The planet is a category that follows its own logic beyond the division into political, geological or economic areas. Instead of control, there is a need to think about how to make the planet habitable. What can we do to maintain or even expand the hospitality of the earth?

Against this background, humankind should no longer see themselves as global players but as planetary subjects.

2. CORE MANAGING TEAM

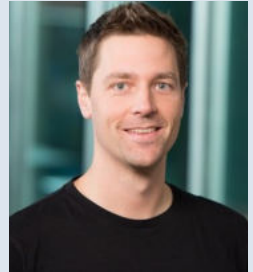


CLAUS LEGGEWIE
Cofounder & Scientific Director

Claus Leggewie is a holder of the Ludwig Börne professorship and recipient of the Cross of Merit 1st Class of the Order of Merit of the Federal Republic of Germany. He focuses on the planet-society interrelations and has had numerous work published ranging from energy transition to climate politics to the Anthropocene.

FREDERIC HANUSCH
Cofounder & Scientific Manager

Frederic Hanusch is a research fellow of the Earth System Governance project and currently a fellow at THE NEW INSTITUTE, Hamburg. His research is focused on the intersections of democracy and planetary change. He is currently working on a book entitled *The Politics of Deep Time* to explore how planetary temporalities can be institutionalized in governance systems.



LIZA B. BAUER
Interim Scientific Manager

Liza Bauer's research focuses on critical animal studies, particularly she is interested in exploring and critiquing the ways in which relationships between humans and so-called farm animals are perceived and practiced. She explores the potentials and limitations inherent to literary texts in terms of expressing planetary phenomena and interconnections.

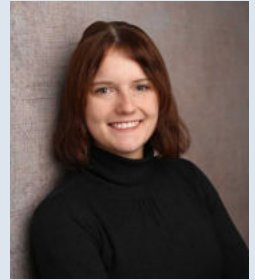


KATHARINA ENDRES
Project Assistant

Katharina Endres is responsible for the organizational support of the visiting scholars and artists and for project assistance and administrative work, as well as for organizing workshops and seminars.

MEIKE WIEGAND
Research Assistant

Meike Wiegand is a research assistant at the Panel on Planetary Thinking with a focus on the philosophy of science and biology. She is currently researching the influences of narratives and metaphors on research in molecular biology. Her work for the Panel mainly consists of outreach and research assistance.



ARAVINDI MUTHUWAHANDI
Research Assistant

Aravindi Muthuwahandi is a research assistant at the Panel on Planetary Thinking with a focus on political economy and sustainability studies. Her tasks for the Panel mainly includes assisting the fellowship program and research work.

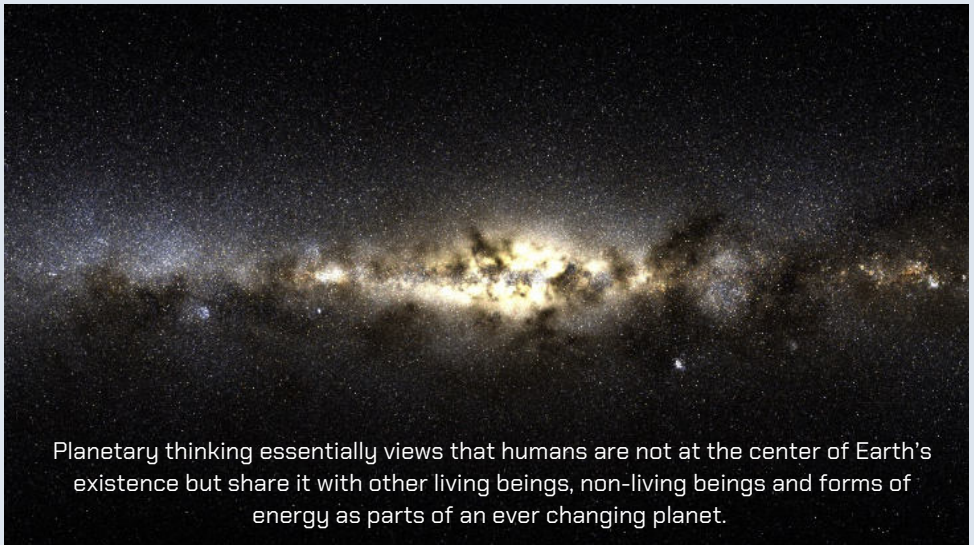


3. HISTORY & MISSION

The Panel on Planetary Thinking was established at Justus Liebig University Giessen on 1 April 2020. The primary objective of the Panel is to bundle up the interdisciplinary and transdisciplinary knowledge at the university to contribute to the international debate on planetary thinking through the university's own research perspective.

On 19 June 2020, the Panel officially held its first cross-disciplinary colloquium in Giessen with the participation of about 30 members of the university from the fields of humanities, social sciences, cultural studies, natural and life sciences. The activities are conducted in accordance with the Hessian Higher Education Agreement 2021-2025.

The Panel also provides the university with scientific support for concept development and strategy formation in the field of sustainability to realize a university-wide sustainability strategy. This is set out in "The Development Plan of Justus Liebig University Giessen: JLU 2030".



Planetary thinking essentially views that humans are not at the center of Earth's existence but share it with other living beings, non-living beings and forms of energy as parts of an ever changing planet.

Our Galaxy, the Milky Way © NASA

4. ACTIVITIES

The Panel coordinates a range of activities to engage the public with its research and artistic practices – an international fellowship program, a lecture series, workshops, exhibitions, and excursions – and collaborates with university and non-university institutions in this endeavor.

4.1 INTERNATIONAL FELLOWSHIP PROGRAM

The **Planetary Scholars & Artists in Residence Program** (2022-2025) constitutes a central part of the Panel's activities. Every year, the international fellowship program provides scholars and artists from different disciplines with the conditions and resources to realize transdisciplinary projects. The aim is to explore how academia and the arts engage with and portray the relationships between societies and the planet.

The fellows are given the space to collaborate on “planetary projects” that focus on the themes of Planetary Materials (2022), Planetary Spaces (2023), Planetary Times (2024), Planetary Agency (summer term 2025), and Planetary Politics (winter term 2025). Central outcomes of these projects are workshop series and exhibitions that seek answers to questions, such as:

- How did planetary forces form us? How did different societies acquire planetary forces that are capable of transforming Earth?
- How can different societies deal with irregular-regular planetary changes that are beyond their influence? What does it mean to have such planetary power, how should it be deployed and when should it be withheld?
- Which planetary forces beyond our influence can we anticipate? Which planetary dynamics can we ally or reunite with, and which alliances should we quit (if possible)?

The Panel welcomed Claudia Hartl, Clemens Finkelstein, Mathias Kessler, and Claudia J. Ford who debated on a range of questions around forest dieback, vibrations, climate grief, and climate change.



CLAUDIA HARTL

Dendrochronologist/Geographer

Project: Tree-Ring Reports on Forest Dieback

The extremely hot and dry summers of 2018, 2019 and 2020 had serious impacts and led to numerous tree die-off. In order to investigate the current forest dieback in more detail, dead and living trees were dendrochronologically investigated in this project.



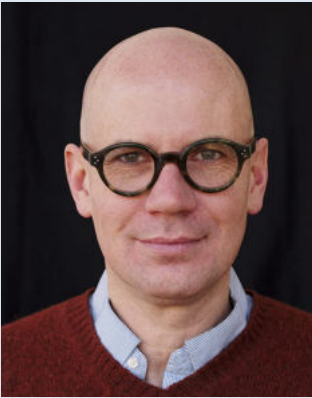
CLEMENS FINKELSTEIN

Architect/Philosopher

Project: Urelement - Vibration as Planetary Transmaterial

The project engaged the planetary entanglements of vibration via architecture, which operates as agential media between the built and natural environment.

It investigated historical conceptualizations of vibration as a planetary transmaterial and linked them to contemporary developments and debates that seek to recalibrate humanity's essential relationships with its surroundings.



MATHIAS KESSLER

Artist/Filmmaker

Project: Rosbach vor der Höhe - An Area of Destructed Woodland

Rosbach vor der Höhe is a forest near Frankfurt that stands as a symbol of the future. It embodies the effects of climate change. Where does art fit into such challenging conditions? The project invited people to experience a forest that is in the process of collapsing; from decomposition to recomposition [see page 27 for a detailed account].



CLAUDIA J. FORD

Visual Artist/Teacher

Project: What Earth is Made of - Planetary Materials, Indigenous Knowledge, and the Gaia Hypothesis

Conceiving of the planet as Gaia, a “self-regulating complex system” or super-organism, maps onto the indigenous ecological thinking about human/planetary interactions and the cosmology that describes kincentric ecological relationships between humans and the planet.

The participatory artwork **Planetary Forest: Bring the Forest into the Garden** was jointly realized by Claudia Hartl, Clemens Finkelstein and Mathias Kessler. The forest sculpture is on view for the public at the Botanical Garden Giessen. In winter 2022, Claudia J. Ford's art exhibition on **Planetary Origin Stories** at MAGIE - Makerspace Giessen was open to the public following a grand reception [see page 27 for a detailed account on the art projects of the fellows].

As a second cohort of fellows, the Panel welcomed Adenike Titilope Oladosu, Jason Waite, Juan Pablo Pacheco, and Bruno Alves de Almeida. In addition, the Panel awarded a publication fellowship to Sybille Anderl.



ADENIKE TITILOPE OLADOSU

Ecofeminist/Climate Justice Leader

Project: Using Earth Observation to Restore Shrinking Planetary Spaces

A Case Study of Lake Chad

The project utilizes remote sensing technologies such as Earth observation (EO) satellites to examine Lake Chad as a severely threatened planetary space from the distance and to communicate insights to the wider public.



JASON WAITE

Curator/Writer

Project: Non-Human Flourishing in Toxic Planetary Spaces

Within the radioactive Fukushima exclusion zone, domestic pigs released by evacuated farmers have mated with wild boars, forming a new hybrid species. The project explores the hidden lives of these boars through an interdisciplinary analysis of new video footage from cameras installed in the zone.

Simultaneously, these more-than-human's adaptations to toxic zones are explored by making a comparison with the same species found in Hessen.



JUAN PABLO PACHECO

Visual Artist/Writer



BRUNO ALVES DE ALMEIDA

Curator/Architect

Joint Project: Environmental Identities at the Ocean Floor

The project explores the forms of life and the flows of energy that thrive on the ocean floor, and their influence on our lives and identities on the planet's terrestrial surface. The research focuses on scientific and theoretical discussions around *Eurythenes Plasticus*, a marine crustacean found at the deepest region of the Mariana Trench and on submarine cables, a deep-sea information infrastructure that increasingly mediates the virtual worlds we inhabit.



SIBYLLE ANDERL

Astrophysicist/Philosopher

Project: The Sun. A Discovery

The publication project looks at the history of the sun's discovery from three angles: (1) it describes how the sun was discovered and what humanity knows about it today; (2) it examines the forms of "sunrise" in cultural ideas and practices; and it asks (3) how far "solar power" might open up sustainable ways of living.

The Planetary Workshop Series constitutes an integral part of the **Planetary Scholars and Artists in Residence Program**. Each semester, the visiting scholars and artists prepare a workshop of one or more days with reference to the fellowship theme and their own focal points. It features exciting content, creative formats, and unusual perspectives that the fellows realize either individually or collaborating with each other. The workshop series engages the public on a wide scale as the Panel collaborates with many university and non-university bodies to realize the events.

Planetary Forest - Bring the Forest into the Garden

workshop & exhibition

June 23-25, 2022

The fellows working on the topic "Planetary Materials", Claudia Hartl, Clemens Finkelstein, and Mathias Kessler, employed different perspectives for their collaborative event. As an integral part of trees, **wood** became the planetary material of the semester as well as the central leitmotif for the workshop. The fellows explored the planetary dimension of human-forest-climate interactions in the Rosbach City Forest whilst providing their expertise to the participants.



The group gathers in front of the disturbance area as Hartl & Rosbach Mayor Steffen Maar explain its history, climatic conditions & measures for its reforestation © Mörsdorf



Mathias Kessler films the group at the lookout of the quartzite plant while Clemens Finkelstein gives insights into current and historical forest use © Mörsdorf



Claudia Hartl takes a core sample from a beech © Mörsdorf

The participants and fellows alike collected forest material for the living sculpture planned by Mathias Kessler: litter, dead wood, topsoil, roots and even the odd seedling. The following day, the fellows designed the living sculpture as an image of a forest habitat in the Botanical Garden Giessen.



Unloading the collected material in the Botanical Garden © Mörsdorf



The fenced-off sculpture to protect it from human and animal influence © Mörsdorf



Mathias Kessler and Claudia Hartl ceremoniously open the joint work of art © Mörsdorf

For two weeks, the Neuer Kunstverein Giessen also hosted an accompanying exhibition at its premises, which documented the work of the three fellows (see page 27 for a detailed account of the art projects).



"Planetary Forest" exhibition at Neuer Kunstverein Giessen © Mörsdorf

Planetary Materials Workshop Series "What Earth is Made of"

excursion, lecture & film screening, creative writing workshop and exhibition
October 18 & November 10-11, 2022

Claudia J. Ford's workshop series focused on our relationship to planetary materials. The series reflected on James Lovelock's Gaia hypothesis from an indigenous perspective to deepen our understanding of planetary materials and their constellations through art and science. The series connected indigenous ideas about ecology with the climate crisis and engaged the participants in storytelling through all of the senses – hands on farm labor, film, creative writing, lectures, listening, dialog, and an exhibition of climate change and planetary materials inspired visual art.

The workshop series commenced with an excursion to JLU's Gladbacherhof farm (for a detailed account, see page 52). The focus was on one of the most fundamental relationships between humans and the environment – namely food production and nutrition.



Farm manager Johannes Eisert leads the group through the new research barn at Gladbacherhof © Bauer

On November 10, Ford delivered a stimulating hybrid lecture on indigenous knowledge and Gaia hypothesis as second event of the workshop series took place. The lecture was followed by the film screening of the documentary “Inuit Knowledge & Climate Change” (2010), the first ever Inuktitut language film directed by Zacharias Kunuk and Ian Mauro. The film took the viewers on a journey with the Inuit elders and hunters whilst exploring the social and ecological impacts of a warming Arctic.



James Lovelock Memorial Lecture © Mörsdorf

On Nov. 11, Ford conducted a writing workshop to express climate grief through creative arts. Participants got an opportunity to practice creative nonfiction environmental writing using planetary materials, which they found in their immediate environment as prompts.



Creative writing workshop on climate grief © Wiegand

The workshop series came to a conclusion with the opening of the exhibition “Planetary Origin Stories”: a collage exhibit at MAGIE - Makerspace Gießen created by Ford (see page 33 for a detailed account of Ford's art project).



Artist's Talk by Ford during the opening of her exhibition 'Planetary Origin Stories'
© Mörsdorf

Planetary Spaces Summer Workshop: “Shrinking Spaces & Toxic Zones”

workshop & mini-exhibition

June 1-2, 2023

As part of their two-day workshop series at castle Rauischholzhausen, Adenike Oladosu & Jason Waite called for a planetary perspective of three different spaces: the severely endangered Lake Chad, the Fukushima exclusion zone following the nuclear disaster, and a Hessian forest area near Biebertal.

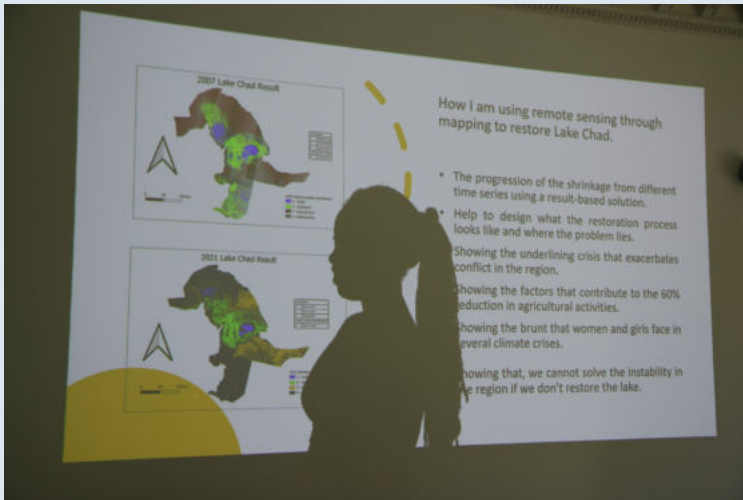
Through lectures, discussion rounds, workshops, and a mini-exhibition, Oladosu and Waite provided the participants with insights into the impacts of long-term environmental disasters on planetary spaces and their human and more-than-human inhabitants. This was followed by a comprehensive art installation of fellows' projects and the results of the workshop at Kunsthalle Gießen from July 6-11, 2023 [see page 38 for a detailed account of the exhibition].



The group posing for a commemorative photo at Castle Rauischholzhausen

The morning of June 01 was dedicated to the topic “Shrinking Spaces: From Mega-Chad to Lake Chad”. Nigerian climate activist, Oladosu showed the participants satellite images of how rapidly Lake Chad has been shrinking since the 1960s. The participants gained an in depth insight into the complex social and ecological conflicts around the lake, which is the basis of life for countless people. To counteract the complete disappearance of Lake Chad, Oladosu called for more responsibility in the Global North to address the climate crisis, as it contributes significantly to the drying up of Lake Chad.

The discussion was followed by a mini-exhibition at the castle. The participants could once again engage with the topics of the workshop through a poster exhibition, a video installation, a VR simulation, and Ford's Book of Condolences on climate grief (see page 33 for a detailed account of Ford's exhibit).



Oladosu explaining the use of remote sensing to map the drying up of Lake Chad and measures to restore this planetary water space © Endres



From left to right: Claudia J. Ford (alumna from "Planetary Materials" fellowship cohort), Adenike Oladosu & Jason Waite discuss the impact of climate change and long-term catastrophes on mental health © Bauer



Liza Bauer and Frederic Hanusch experience the VR simulation of the Fukushima exclusion zone © Endres

The second day focused on the more-than-human inhabitants of planet Earth. Waite showed the participants astounding wildlife camera footage from the exclusion zone around Fukushima, which has become a home to a variety of animals in the absence of humans.



Guest speaker Kieran O'Mahony [right] sharing his expertise on adaptation strategies of wild boars and other more-than-human species © Endres

The program was rounded off with a joint drawing workshop on the topic of “Imagining More-Than-Human Infrastructure”. The participants' imagination was required as they collectively drafted sketches of how a farm in Fukushima could be redesigned to provide a shared home for humans and animals to thrive freely.



Imagining infrastructure for a harmonious human and more-than-human space © Bauer

4.2 ART PROJECTS

In connection to their participatory workshops, the visiting fellows at the Panel initiate and realize art projects of different formats.

Forest sculpture - “Planetary Forest: Bring the Forest into the Garden”

The sculpture is the result of the collaboration of the very first round of fellows; Claudia Hartl, Mathias Kessler and Clemens Finkelstein in 2022. Placed at the Botanical Garden Giessen, the Planetary Forest Sculpture portrays the scientific and cultural-technical construction of “natural” worlds. In this artwork, the regional forest soil is relocated and recreated as a living sculpture. The “planetary material” comes from an ecologically disturbed forest area in the city of Rosbach vor der Höhe in Hessen, which is severely affected by forest dieback. The sculpture carries the natural forest to the human-made world of the botanical garden.



Planetary Forest Sculpture © Muthuwahandi

It serves as an ethical, aesthetic, ecological, and political disruption that informs the visitors on the topic of forest dieback and the artificiality of nature. The artwork sparks discussions on the harmful impacts of climate change and human societies on local forests, reflected on in a planetary context.

The fenced-off piece of the disturbed forest site will remain untouched for three years. The Panel makes close observations to record how different species would thrive in this living sculpture. Will the forest make its way into the garden, will the garden reclaim the area, or perhaps nothing will happen for a while?

Keeping a close inspection of the sculpture



Planetary Forest Sculpture photographed in July 2022 © Bauer



Planetary Forest Sculpture photographed in September 2022 © Bauer



Planetary Forest Sculpture photographed in December 2022 © Muthuwahandi



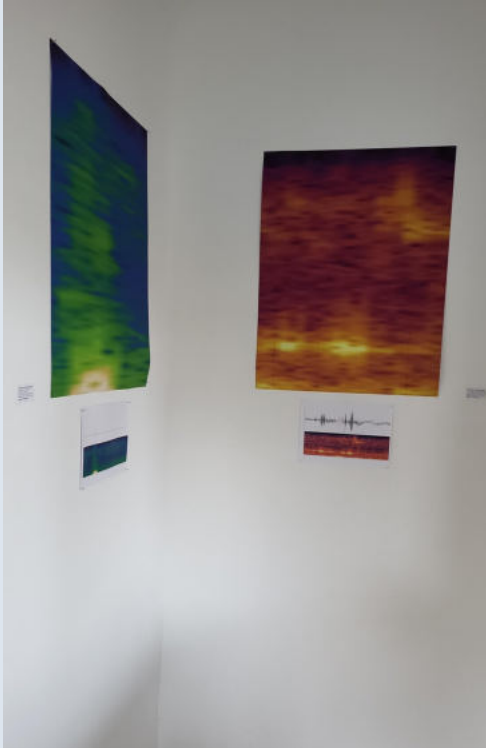
Planetary Forest Sculpture photographed in June 2023 © Endres



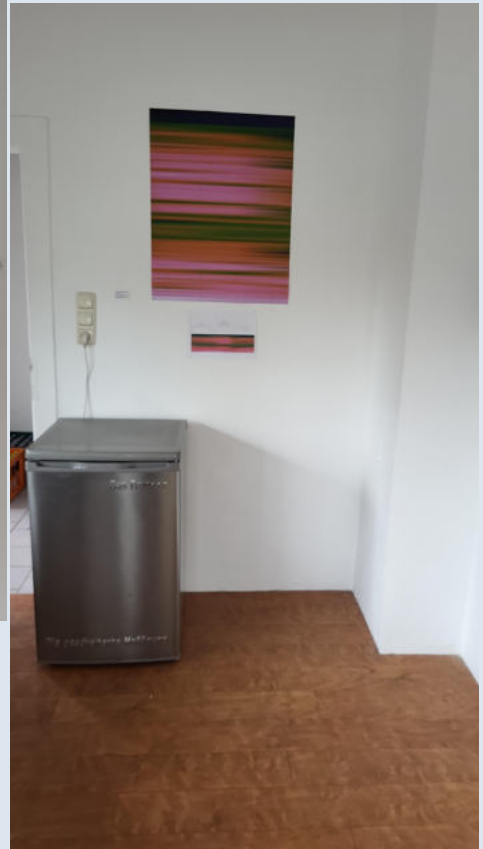
Planetary Forest Sculpture photographed in June 2023 © Castro-Campos

Complementary Exhibition “Planetary Forest” at Neuer Kunstverein Giessen

An exhibition complementing the installation of the 'planetary forest' sculpture was showcased at Neuer Kunstverein Giessen which documented the progression of the projects of the three fellows in the Planetary Scholars & Artists in Residence Program.



Vibratory signatures © Bauer



Vibratory signatures and art refrigerator © Bauer



A piece of forest from Rosbach City Forest's dieback displayed at the exhibition © Bauer

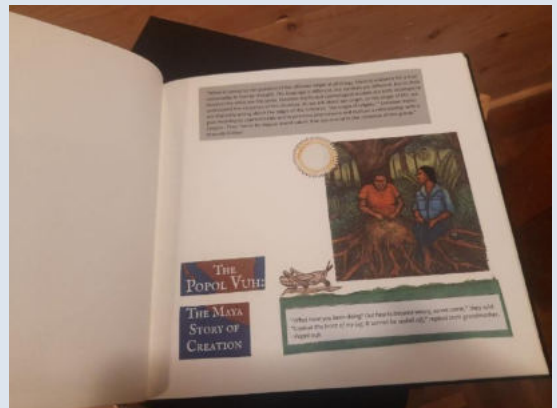


Documenting the process of the fellows' projects © Bauer

Exhibition “Planetary Origin Stories” at MAGIE - Makerspace Giessen

“Planetary Materials” fellow Claudia J. Ford’s workshop series “What Earth Is Made of” came to a grand conclusion with the opening of the exhibition “Planetary Origin Stories”: a collage exhibit at MAGIE - Makerspace Gießen.

The exhibit was intricately woven around the subject matter of ecological destruction and climate grief. The beauty and finesse of Ford’s pieces paid tribute to the color, shape and form of the natural world and recounted our collective responsibility to safeguard the Earth’s beauty and resources.



Book of Condolences; a story of climate grief compiled by Ford © Wiegand



"The Cosmic Show": collage exhibit by Ford © Wiegand



"Death of the Queen": collage exhibit by Ford © Wiegand



"The Alchemy of DNA": collage exhibit by Ford © Wiegand



"The Planetary Garden": collage exhibit by Ford © Wiegand



"When Stars Sang": collage exhibit by Ford © Wiegand



"The Tree of Knowledge": collage exhibit by Ford © Wiegand

Long-Term Project “More-Than-Human Worlds in Fukushima: Don’t Follow the Wind”

The long-term collective project “Don’t Follow the Wind” explores the long-term environmental crisis in the coastal Japanese region through this ongoing, inaccessible exhibition, which maintains traces of human presence amid the fallout of the March 2011 nuclear reactor meltdown in the Fukushima exclusion zone that displaced entire towns. What can art do in a continuing catastrophe when destruction and contamination have made living impossible?

The collective “Don’t Follow the Wind” includes curator and writer Jason Waite, fellow in the second cohort of the Planetary Scholars & Artists in Residence Fellowship Program on Planetary Spaces (summer 2023). Although the exhibition opened in March 2015, the zone is still inaccessible to the public—the exhibition, like the radiation, is virtually invisible. In the long interim, while people can’t visit, the collective started noticing traces of more-than-human visitors to the exhibition such as wild boars, raccoon dogs, and monkeys. The group has been collaborating with scientists and researchers to learn more about this present more-than-human community in order to think toward a future co-existing with returning human residents. The Panel on Planetary Thinking is a supporting collaborator in this ongoing research.



The curatorial team on a site visit in the Fukushima exclusion zone © Don’t Follow the Wind



A raccoon dog captured by a trail camera at the exclusion zone © Don’t Follow the Wind

Exhibition “Unstable Planetary Spaces”

From 6-11 July 2023, the exhibition “Unstable Planetary Spaces” at Kunsthalle Gießen explored how artists and activists grapple with some of the most challenging long-term disasters of recent times: the shrinking of Lake Chad due to human induced climate change and the irradiated Fukushima exclusion zone after the 2011 nuclear disaster in Japan. The event showcased the works of the “Planetary Spaces” summer fellows; Adenike Titilope Oladosu and Jason Waite along with the works of Eva & Franco Mattes (Don’t Follow the Wind) and Ahmet Ögüt.



Exhibition “Unstable Planetary Spaces” © Endres



Audio-visual experience of human and more-than-human life in the Fukushima exclusion zone © Endres



Exhibition room with satellite images and video installation of shrinking of Lake Chad © Endres

4.3 PLANETARY FUTURES COMPETITION

The Planetary Futures Competition (2022-2025) provides financial support for transdisciplinary research projects that are in the initial stages of applying for external funding. The objective of the competition is to support explorative and ambitious research projects that apply innovative approaches and methods that reach beyond disciplinary boundaries. The winners of the 2022 competition are in the process of developing a 'Planetary Pedagogy' that seeks to enable students of applied theatre studies to grapple with planetary crises in their artistic and academic work.

Planetary Futures Competition Vol. I (2022)

Planetary Pedagogy - Performance and Education in Times of Ecological Catastrophes

A series of workshops were conducted exploring the relation of artistic practices to planetary and ecological forms of knowledge. The workshops included bodily, sensational, affective practices as well as forms of play and storytelling. The aim was to share practices developed in the field of performance art to explore the possibilities of a planetary pedagogy, working across art, activism, community gatherings, universities, and other educational contexts.



Sitting on the ground of the theatre lab, the participants contemplate what the concept of “the Planetary” means for each one of them personally © Bauer

Urban Greening

In 2023, Prof. Dr. Mirjam Stockburger and Lukas Spatz from the Department of Economics at Justus Liebig University Giessen receive funding from the Panel for a proposed project that seeks to evaluate the impact of urban greening projects on people's health and well-being, the housing market and municipality finances.

The project will utilize a novel approach to examine causal effects by studying the award procedure of national and state garden shows using data combinations. It explores the conception of environmental justice by specifically analyzing the consequences of such greening events on the landscape, studying the effects of such green, public goods on economic outcomes (such as housing prices, local economy), and by analyzing their impacts on inhabitants' health and well-being as well as on socioeconomic disparities.



© North News and Pictures Ltd.

4.4 SCIENTIFIC OUTREACH

In the shape of lectures, colloquia, and publications, the Panel communicates the outcomes of its research activities to the scientific community and beyond.

Planetary Lecture Series

The Panel organizes biannual hybrid lectures, for which it invites experts from different fields to introduce and discuss a topic of planetary relevance. Recordings of the events are available for streaming on the Panel's YouTube channel.

Planetary Lecture #1 | Planetary Law for the Anthropocene by Prof. Dr. Dr. Louis Kotzé

Faculty of Law, North-West University, South Africa



The lecture addressed the question: how can the existing Holocene international environmental law regime be re-imagined in order to provoke a long overdue paradigm shift that is able to confront the Anthropocene's deepening socio-ecological crisis within a planetary context?



Planetary Lecture #2 | Sturmnomaden. Der Klimawandel verlangt eine neue Migrationspolitik

German lecture by Dr. Kira Vinke

Center for Climate and Foreign Policy at the German Council on Foreign Relations



A lecture on the issue of the need for a policy that recognizes climate change and biodiversity loss as reasons for flight, prompting to take a fresh look at the issue of global migration.



Planetary Lecture #3 | Drift as a Planetary Phenomenon **by Prof. Dr. Bronislaw Szerszynski**

Department of Sociology, Lancaster University, United Kingdom



A lecture-performance on 'drift' as a primordial form of motion within the extended body of the Earth. What can balloons and other drifting things tell us about the planetary conditions for motion? How do living and non-living entities engage in 'driftwork', in which drift is subsumed within a wider set of purposes or functions? How can drift remind us of our debt to the planetary mobility commons – the Earth seen as a storehouse of accumulated experiments and potentialities?

[The recording will be available for streaming shortly]

Planetary Lecture #4 | Planetary Intersectionality **Feminism, Impermanence and the Radicalness of Simplesness** **by Minna Salami**

THE NEW INSTITUTE, Hamburg



After making the case for the promises of feminism in understanding our transforming nature, the talk will address 'planetary intersectionality' as a prism to connect humans, Earth and metaphysics, as well as oppression, crisis, and impermanence.

[The recording will be available for streaming shortly]

Planetary Colloquia

The planetary colloquia take place at regular intervals and serve mainly for academic exchange. The Panel invites experts on a question with planetary relevance, who give [short] lectures from different [academic] perspectives. These impulses from different disciplines form the basis for a scientific discussion of the topic and thus promote interdisciplinary dialogue.

The planetary colloquia are designed as hybrid events: to take the conversation beyond the physical boundaries of Giessen and to make it more accessible. Afterwards, recordings of the events are uploaded on the Panel's YouTube channel. The colloquia have thus far engaged with the topics, **Perspectives on the Planetary, Perspectives on the Rights of "Nature" and The Sun. A Discovery.**

Planetary Colloquium | Perspectives on the Planetary

The Panel in cooperation with the Planetary Thinking Working Group (Goethe University Frankfurt, Senckenberg, ISOE) and the Forschungskolleg Humanwissenschaften, organized the first planetary colloquium. In a digital atmosphere, around thirty participants from different academic backgrounds exchanged thoughts and ideas on the challenges facing our planet and the urgent need of inter- and transdisciplinary approaches in order to tackle them.



Planetary Colloquium | Perspectives on the Planetary on June 4, 2021 © Hanusch

Planetary Colloquium | Perspectives on the Rights of "Nature"



In the face of the ongoing loss of biodiversity on the planet, more and more voices are calling for an entrenchment of solid rights of "nature" within Western legal systems. In our planetary colloquium, questions about whether, how, and why the planet's myriad animal, plant, microbial, and other inhabitants can shape human politics were debated on.

In his opening keynote "What rights does nature need?" sociologist Frank Adloff (University of Hamburg) traced the development of different conceptions of rights for animals, plants, and ecosystems while sociologist Doris Schweizer (Goethe University Frankfurt) raised concerns about the transferability of human conceptions of law to non-human "legal persons". Ecosystem researcher Emily Poppenborg Martin (JLU Giessen) followed by raising further doubts especially with regard to the nature-culture divide. Lawyer Franziska Johanna Albrecht (Green Legal Impact, Berlin) was able to show that rights of "nature" - however imperfect they may be - can serve as effective tools in terms of representing non-human interests.



From left to right - Liza Bauer, Frank Adloff, Emily Poppenborg Martin, Franziska Johanna Albrecht and Doris Schweizer lead the discussion on November 10, 2022 © Wiegand

Planetary Colloquium | The Sun. A Discovery

We all consist of stardust. This often quoted insight of astrophysics establishes a connection between our own existence and our own home star, the sun. As almost all elements besides helium were born inside stars by nuclear fusion or were created when stars ended their life, we are dependent to the sun not only with respect to our material constitution but in practically all aspects of our life. For humanity, viewing and observing our sun has been an ever-renewed and reinterpreted discovery, sometimes leading to anthropocentric pride, sometimes to planetary humility.

Connected to the interdisciplinary publication project on the sun's history of discovery by Sibylle Anderl (see page 15), the colloquium brought together expert perspectives from various disciplines, such as solar system research, cultural studies, and art history.



Planetary Colloquium | The Sun. A Discovery on September 19, 2023 © Wiegand

In cooperation with Kinocenter Gießen, the Panel screens films of planetary relevance to the public and invites experts on relevant fields to conduct a lively discussion after the screening.

Oppenheimer (2023)

(Directed by Christopher Nolan)

Discussion with Dr. Simon Märkl

Catholic University of Eichstätt-Ingolstadt

July 25, 2023

The Panel invited the moviegoers to the screening of Christopher Nolan's *Oppenheimer* to kick-off the Panel's Planetary CineScience series. Dr. Simon Märkl was invited as the guest for a film talk.

In his dissertation "Big Science Fiction", the cultural historian uses the example of nuclear fusion research in the USA to describe the complex relationship between science, politics and propaganda during the Cold War. Before the film, he gave a short introduction to the topic, which led to a productive and exciting discussion afterwards.



Dr. Simon Märkl introduces the movie to the crowd with a brief historical background
© Wiegand

Dark Waters (2023)

(Directed by Todd Haynes)

Discussion with Claus Leggewie

Panel on Planetary Thinking

September 26, 2023

Not only since the recently published General Update of Planetary Boundaries or the Forever Pollution Project, the chemical group of PFAS (Per- and polyfluoroalkyl substances), so-called “forever chemicals” and components of clothing, paint, cleaning agents, or packaging, has been controversial. In connection with these debates, Claus Leggewie led an insightful discussion following the movie screening.



Liza Bauer and Claus Leggewie giving an introduction to the movie © Muthuwahandi

Planetary Library

The Planetary Library comprises of selected scientific and science related books on the topic of planetary thinking. A library catalogue can be found in the Online Public Access Catalogue [OPAC] of JLU by search for "hap62202094". The books of the library can be viewed at the Hub of the Panel.

The books are categorized to the topics of Agency, Animals, Democracy, Earth, History, Infrastructure, Interplanetary, Outer Space, Planetary, Planets, Political Ecology, Politics, & Technosphere.



Planetary Library © Muthuwahandi

4.5 EXCURSIONS

"Planetenlehrpfad" Hike

Marburg

April 26, 2022

The Panel's first excursion was a hike along "Planetenlehrpfad"; the world's first planetary trail for the blind and sighted. The astronomical dimensions of our solar system is mapped at a scale of 1:1 billion over a distance of 6 km, i.e. 1 m in the model corresponding to 1 million km in reality, with the earth shrinking to the size of a hazelnut. The hike was complemented with a Marburg city tour as a welcome to the 'Planetary Materials' summer fellows.



The group hiking along the world's first planetary trail © Bauer

Field Work in the Rosbach City Forest

Rosbach vor der Höhe
April 8, 2022

The Panel and a small group of students headed to the Rosbach City Forest as the **Planetary Scholars & Artists in Residence Program** kickstarted - with the fieldwork resulting in collecting core samples from forty beech trees. In the course of her fellowship project "Tree Ring Reports on Forest Dieback", dendrochronologist Claudia Hartl investigated the vitality as well as the reactions of healthy as well as dying beech trees to draught events or extreme weather events. Thanks to the active support of Prof. Lea Schneider (Institute of Geography, JLU) as well as her students, ~12,000 tree rings found their way into Hartl's long-term study.

The team learned about the many applications of tree-ring research. These ranged from determining the origin of construction materials, dating and certifying works of art or musical instruments, to today's widespread research into tree species suitability or climatic change. The annual rings showcase how planetary phenomena, reaching from heat waves to world wars, materialize in locally specific and tangible manners.



Claudia Hartl inspecting a freshly drawn core from one of the beeches © Bauer

Community Farm Day

Glabbacherhof

October 18, 2022



The group harvests the kale for lunch directly in the field © Wiegand

The kickoff event for the “Planetary Materials” fellow Claudia J. Ford's workshop series **What Earth is Made of** took place as an excursion to Glabbacherhof farm. The farm functions as a teaching and research unit of the JLU in the field of organic farming to further develop sustainable concepts for organic farming.

The excursion served to rethink the human relationship to the earth and its materialities by combining diverse perspectives from applied fields, science, and the arts. The focus was on one of the most fundamental relationships between humans and the environment - namely food production and nutrition.

The group made a tour of the newly built dairy cattle research barn, where fully automated milking machines and a fully automated feeding and cleaning system are intended to enable both the study of climate gas emissions in organic farming as part of the “Green Dairy Project”.

Scientific presentations & discussions were held on various topics which included considerations on decision-making criteria for farmers in dealing with sustainable technologies, new approaches in agroforestry, and a plea for more care in agriculture. Dr. Philipp Weckenbrock also introduced the group to the farm's on-site laboratory facilities.



Claudia J. Ford pleads for more care in agriculture © Wiegand



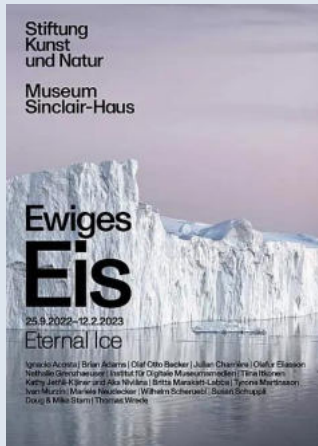
Philip Weckenbrock explains the experimental setup for analyzing the productivity of different agroforestry systems © Wiegand

Exhibition “Eternal Ice”

Museum Sinclair-Haus, Bad Homburg vor der Höhe

October 27, 2022

The Panel visited the Sinclair-Haus to view the international exhibition “Eternal Ice”. The exhibition displayed selected works of contemporary artists who showcased the cultural, political, social and other interrelationships in light of the global ice melt; its effects on local indigenous communities and on the world climate as a whole.



Claudia Ford and Aravindi Muthuwahandi looking at the varieties of color shades ice can take © Bauer

Exhibition “Plastic World”

Schirn Kunsthalle, Frankfurt

September 28, 2023

The Panel visited the Schirn Kunsthalle Frankfurt to view the exhibition “Plastic World”. The exhibition showed the history of plastics in the visual arts – from being celebrated as the eternal material, symbolizing progress and modernism to being the ultimate threat to the environment. The works of around 50 international artists were exhibited in the forms of installations, assemblages and documentaries.



L'arbre à palabres by Pascale Marthine Tayou © Schirn Kunsthalle Frankfurt



The group poses under a fascinating plastic sculpture © Schirn Kunsthalle Frankfurt

The Parliament for the Future

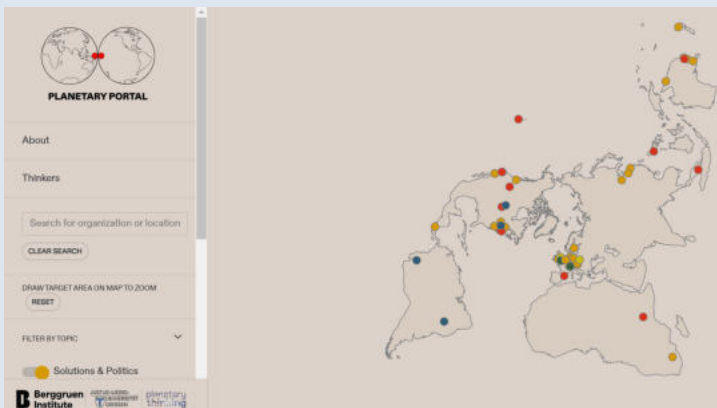
In collaboration with City Theatre Giessen, the Panel organizes a series of events under the headline “**The Parliament for the Future**” which kickstarted on September 25, 2023 with a refreshing lecture and discussion by Claus Leggewie [Director, Panel on Planetary Thinking] on the topic “Before practice comes theory, or: Who sits in the parliament of things?”. During the talk, he invited the guests to consider the idea of an expanded representation.

The series will culminate in the end of the summer term 2024. A range of different events, such as lectures, discussion rounds, city exhibitions, sustainable cooking nights, and a performative piece are in the making. More information available on the theatre's [website](#).



Planetary Portal

On September 21, 2023, the Panel in collaboration with the Planetary research program at the Berggruen Institute, a think tank based in Los Angeles launched the “Planetary Portal” on planetaryportal.org. The website shows the institutes, indigenous movements and prominent individuals that are working on or within a planetary framework. These include university research centers, independent research institutes, NGOs, and other organizations that approach policy, politics, and philosophy through a planetary lens.



Planetary Portal mapping the planetary thinking institutes around the world

4.6 FORTHCOMING EVENTS

Planetary Scholars & Artists in Residence Program

Planetary Spaces: Wet Workshop

by Juan Pablo Pacheco

November 2-4, 2023

How can we better understand our relationship to the ocean floor, and what can it teach us about our chances for survival? Could a speculative inhabiting of the ocean floor open up new insights for the ways in which we relate with our surroundings? The wet workshop creates an open space to expand how we relate to the multiple bodies of water within and around us.

Planetary Lecture Series

Planetary Lecture #5 | Water as an Engineered Planetary Space

by Prof. Klement Tockner

Director Senckenberg Society for Nature Research, Frankfurt

November 3, 2023

Exhibition

Planetary Spaces: Vibrating Bodies of Water

by Juan Pablo Pacheco

Neuer Kunstverein Giessen

November 10, 2023



The exhibition proposes a deep listening of the bodies of water in Giessen and to our own bodies as vibrating water, seeking to connect to the remote corners of the deep-sea. The audiovisual content of the exhibition emerges from the wet workshop led by Planetary Spaces fellow Juan Pablo Pacheco Bejarano between 2-4 November 2023.

Planetary CineScience

Mad Max: Fury Road (2015)

[Directed by George Miller]

Discussion with Meike Wiegand
Panel on Planetary Thinking
November 28, 2023

2001: A Space Odyssey (1968)

[Directed by Stanley Kubrick]

Summer semester 2024



**Planetary
CineScience**

An exploration in art, science and
planetary through the lens of cinema.

In cooperation with Kinocenter Gießen

**Programm
Wintersemester 2023/24**

28.11.23 19 Uhr | Mad Max: Fury Road (OV)
(2015, George Miller)

Mad Max kann seine wilde Vergangenheit nicht vergessen und beschliesst, dass er allein die besten Überlebenschancen hat. Dennoch gerät er in der Wüste an eine Gruppe Flüchtlinge in einem Kampfwagen – am Steuer sitzt die elitäre Herrscherin Furiosa. Die Gruppe ist aus der Zitadelle des Tyrannen Immortan Joe entkommen, dem etwas Unersetzliches gestohlen wurde. Also setzt der wütende Warlord seine Banden in Marsch, um die Rebellen zu verfolgen – ein temporeicher Straßenkrieg beginnt.

Filmgespräch mit Meike Wiegand
(JLU; Panel on Planetary Thinking)

**Weitere Veranstaltung:
Sommersemester 2024
2001: A Space Odyssey (OmU)**

5. PUBLICATIONS

Upcoming publications

2024

Bauer, L. B.: *Livestock in the Laboratory of Literature. Postanimal Companion Species in Literary Thought Experiments*. Cham: Palgrave.

Leggewie, C.: *Kosmo.Polis. Eine Revision*. C.H. Beck: München.

2023

Bauer, L. B., Hanusch, F., Leggewie, C.: *Planetary Paradigm*. Cambridge: Cambridge University Press. [Open Access Cambridge Elements]

Hanusch, F.: Introduction, in Hanusch, F., Katsman, A. [eds.]: *Interventions on the Future of Democracy*. Bielefeld: transcript.

Hanusch, F.: *Radical Inclusivity. Towards Planetary Democracy*, in Hanusch, F., Katsman, A. [eds.]: *Interventions on the Future of Democracy*. Bielefeld: transcript.

Hanusch, F.: *The United Times. A Thought Experiment for Planetary Law*, in Kotzé, L. [ed.]: *Principles of Earth System Law*. Cambridge: Cambridge University Press.

Hanusch, F., Biermann, F.: *Deep-Time Governance*. Cambridge: Cambridge University Press. [Open Access Cambridge Elements]

Hanusch, F., Leggewie, C.: *Agenda*, in Wallenhorst, N., Wulf, C. [eds.]: *Handbook of the Anthropocene*. Basingstoke: Springer Nature.

Hanusch, F., Leggewie, C.: *Thought*, in Wallenhorst, N., Wulf, C. [eds.]: *Handbook of the Anthropocene*. Basingstoke: Springer Nature.

Leggewie, C.: *Art. "Thought" and "Boundaries"*, in Wallenhorst, N., Wulf, C. [eds.]: *Handbook of the Anthropocene*. Basingstoke: Springer Nature.

Leggewie, C.: *Chittagong Schiffbruch. Visuelle Evidenzen zur Globalisierungskritik*. Spectorbooks: Leipzig.

Morán, A., Hanusch, F.: *The Potential of Pluralizing Participation? The Consultation Processes in Santa María Cahabón*.

Published work

2023

Leggewie, C.: Die Konsultative. Mehr Demokratie durch Bürgerbeteiligung. 5. Aufl. Wagenbach: Berlin.

Leggewie, C.: Lone LA oder Die Kunst, unter vier Millionen einsam zu sein. Anmerkungen zu Fotoreportagen von Janet Sternburg und Christian Werner, in Claudia Hattendorff et al. (Hrsg.): Bilder der Pandemie. Campus: Frankfurt am Main.

Leggewie, C.: Review. Sturmnomaden. Wie der Klimawandel uns Menschen die Heimat raubt von Kira Vinke, München.

2022

Bauer, L. B.: Reading to Stretch the Imagination. Exploring 'Livestock' Animal Representations in Literary Thought Experiments, in Hübner, A. (ed.): [Multispecies Futures. New Approaches to Teaching Human-Animal Studies](#). Berlin: Neofelis, 95-114.

Hanusch, F., Meisch, S.: The Temporal Cleavage. The Case of Populist Retrotopia vs. Climate Emergency. *Environmental Politics*, 31:5, 883-903. DOI: [10.1080/09644016.2022.2044691](https://doi.org/10.1080/09644016.2022.2044691).

Leggewie, C.: Eine bestimmte Idee von Freiheit. André Gorz zum 100. Geburtstag, in *WestEnd, Neue Zeitschrift für Sozialforschung* H. 1/202; AS. 185-201.

Leggewie, C.: Reparationen. Im Dreieck Algerien, Frankreich, Deutschland. Verlag Donata Kinzelbach: Mainz.

Leggewie, C.: Review. Das Klima der Geschichte im planetarischen Zeitalter von Dipesh Chakrabarty. *Frankfurter Rundschau*.

Leggewie, C.: Technocracy revisited? Rezension zu "Anpassung - Leitmotiv der nächsten Gesellschaft" von Philipp Staab. *Soziopolis: Gesellschaft beobachten*.

Leggewie, C., Hanusch, F., Bauer, L. B., Hartl, C., Finkelstein, C.: Das Planetarische Politisch[e] Denken. *Politische Vierteljahresschrift/German Political Science Quarterly*, 63:4, 703-728. <https://doi.org/10.1007/s11615-022-00433-3>.

2021

Asenbaum, H., Hanusch, F.: [De]Futuring Democracy. Labs, Playgrounds, and Ateliers as Democratic Innovations. *Futures*, 134, 1-11.

Bauer, L. B.: Eating Kin or Making Kin? Farm Animal Representations in Twenty-First Century Fiction, in Ansgar Nünning and Alexander Scherr (eds.): *Literature & Literary Studies in the 21st Century. Cultural Concerns – Concepts – Case Studies*. Trier: WVT.

Bauer, L. B.: Introduction. Ecocriticism and Narrative Form. *SubStance*, 50:3, 3-13. DOI: [10.1353/sub.2021.0015](https://doi.org/10.1353/sub.2021.0015).

Bauer, L. B.: Mit anderen Tieren leben. Lernen an der Schnittstelle zwischen fiktiven Tiertexten, lebendigen Tieren und tierethischen Bestrebungen, in Simone Horstmann (ed.): *Interspezies Lernen. Grundlinien interdisziplinärer Tierschutz- und Tierrechtsbildung*. Bielefeld: Transcript.

Hanusch, F.: Embeddedness as a Quality Assessment Tool for Teaching-Learning Processes. *HINT. Heidelberg Inspirations for Innovative Teaching*.

Hanusch, F., Leggewie, C., Meyer, E.: *Planetar denken. Ein Einstieg*. Bielefeld: transcript.

Rezensionen bei Bayern 2, socialnet, Spektrum Wissenschaft etc.

Hanusch, F., Schad, M.: Hydrogen Research. Technology First, Society Second?. *GAIA*. 30:2, 82-86. DOI:[10.14512/gaia.30.2.5](https://doi.org/10.14512/gaia.30.2.5).

Leggewie, C.: In Place of an Afterword. Report from an Ongoing Self-experiment, in Schwedes, D., Keichel, M. (eds.): *The Electric Car. Mobility of Upheaval*, Wiesbaden: Springer, 141-144. DOI:[10.1007/978-3-658-29760-2_7](https://doi.org/10.1007/978-3-658-29760-2_7). [Open Access]

Leggewie, C.: Neues vom Grand Hotel Abgrund. Der Paradigmenwechsel vom Kosmopolitismus zur Kosmo-Politik, in *Zeitschrift für Vergleichende Politikwissenschaft* 15, 119–136. DOI:[10.1007/s12286-021-00479-4](https://doi.org/10.1007/s12286-021-00479-4). [Open Access]

Leggewie, C.: Quivive: Der Kuss des Bären und die Lehren der Ungewissheit, in *MerkurHeft* 868, 75. Jahrgang, S. 74–78.

Leggewie, C., Kübler, L., Nanz, P.: Demokratische Innovation durch Bürgerräte, in *APuZ* 26/27.

Leggewie, C., Lenger, F.: Reformunfähigkeit des Kapitalismus? Zur Möglichkeit eines Green New Deal, in Shalini Randeria (Hg.), Kapitalismus im 21. Jahrhundert, Passagen: Wien. 117-140.

Leggewie, C., Ouaisa, R. Algerien: Das Ancien Régime vor der Implosion? [Blätter](#), 66:7, 33-36.

2020

Hanusch, F.: Demokratie und Klimawandel, in Demokratie gegen Menschenfeindlichkeit, 5:1, 18-21.

Hanusch, F., Biermann, F.: Deep-time Organizations: Learning Institutional Longevity from History. *The Anthropocene Review*, 7:1, 19–41. <https://doi.org/10.1177/20530196198886670>.

Leggewie, C.: BRÜDER, ZUR SONNE... Wie das Wettrennen ins All die planetare Achtsamkeit bestärkte. *Lettre International*, 129, 60-63.

Media Contributions

06.03.2023

Leggewie, C.: Bleibt der Erde treu! Rezension zu "Geozozoologie. Die Erde als Raum des Lebens" von Markus Schroer. [Soziopolis](#).

15.03.2023

"How can we think like a planet? Political scientist Frederic Hanusch in an interview about planetary thinking and what it has to do with our democracy". [Futurium](#), Berlin.

02.02.2023

Leggewie, C.: Exilierte Akademiker. Die wissenschaftliche Gemeinschaft hat ihre Tücken. [Frankfurter Allgemeine Zeitung](#).

23.01.2023

Bauer, L. B.: [Podcast](#): Knowing Animals. Teaching Literary Animals Studies.

17.11.2022

Hanusch, F.: Scobel – Zukunft gestalten. [Live Sendung auf 3Sat](#).

08.11.2022

Leggewie, C.: Eigener Koordinator für Raumfahrt. [Frankfurter Allgemeine Zeitung](#).

11.09.2021

Wir leben nicht auf einem Planeten, wir sind Teil von ihm. Interview mit Frederic Hanusch über planetares Denken in den Wissenschaften. [L.I.S.A. Gerda Henkel Stiftung Wissenschaftsportal](#).

14.08.2021

Leggewie, C. Und es wurde Licht? [taz am Wochenende](#).

25.07.2021

Leggewie, C. Gabentausch – Zur Idee eines Homo Cooperativus. [Deutschlandfunk](#).

19.06.2021

Leggewie, C. Wie man keine Revolution macht. Buchrezension, [taz am Wochenende](#).

07.06.2021

Leggewie, C.; Ouaisa, R. Angst vor neuen Monstern. [IPG Journal](#).

13.01.2021

Leggewie, C. „Du bist zurück. Und jetzt“ Dana Rangas Gedichte kommen fast prosaisch daher – und sind doch planetarische Poesie, in: [Berliner Zeitung, Feuilleton, 15](#).

29.09.2020

Hanusch, F., Leggewie, C.: Planetares Denken: Über Demokratie und Nachhaltigkeit. [Podcast mit Hessen schafft Wissen](#).

05.08.2020

Hanusch, F., Leggewie, C.: Einstieg ins planetare Denken, in: [Frankfurter Allgemeine Zeitung](#).

Publications in Connection with the International Fellowship Program

Upcoming publications

2023

Hartl, C.: Machine Learning and Tree-Ring Research: Gridded Forest Growth Product. Nature Communications.

Published work

26.09.2023

Pacheco Bejarano, J. P.: [Wet Reader](#). [Produced in context with the Planetary Spaces Winter Fellowship]

03.01.2023

Finkelstein, C., Morley, M.: The Unheard Symphony of the Planet. [The New York Times](#). [Data collection in context with the Planetary Materials Fellowship]

25.10.2022

Finkelstein, C.: Environmental Control: Seismicity as Design Technique in Wilhelmine Germany, Doc Talks x MoMa [New York City].

06.05.-28.08.2022

Finkelstein, C.: Sick Worldbuilding Syndrome, Sick Architecture Exhibition [Brussels].

07.-12.06.2022

Finkelstein, C.: Vibrascapes: Contact Zones and Planetary Media". [koozArch](#), Milan Design Week. [Data collection in context with the Planetary Materials Fellowship]

02.05.2022

Finkelstein, C.: Planetary Disequilibrium". [e-flux Architecture](#) [Sick Architecture series]. [Data collection in context with the Planetary Materials Fellowship]

Hartl, C.; Schneider, L.: Hartl - Rossbach vor der Höhe 1 - FASY - ITRDB DEU338, NOAA Study Page. <https://doi.org/10.25921/gyns-d243>. [Data collection in context with the Planetary Materials Fellowship]

Hartl, C.; Schneider, L.: Hartl - Rossbach vor der Höhe 2 - FASY - ITRDB DEU339, NOAA Study Page. <https://doi.org/10.25921/vbkf-yj89>. [Data collection in context with the Planetary Materials Fellowship]

6. PANEL IN THE MEDIA

27.09.2023 - [Newspaper article, Gießener Anzeiger](#):

"Eine Stimme für die anderen: Diskussions- und Vortragsreihe »Das Parlament der Zukunft« im Stadttheater eröffnet"

21.03.2023 - [Essay by Georg Diez, Zeit-Online](#):

"Planetare Politik: Wir müssen unsere Weltsicht fundamental ändern."

03.01.2023 - [Newspaper article, Gießener Anzeiger](#):

"Der Blick aufs "große Ganze".

16.12.2022 - [Press release, Justus Liebig University Giessen](#):

"Internationale Gäste erschließen planetare Räume. Planetary Scholars & Artists in Residence Program: Innovatives Stipendienprogramm der Universität Gießen für Tandems aus Wissenschaft und Kunst steht 2023 unter dem Motto 'Planetary Spaces' – Reflexive Forschung zur Nachhaltigkeit."

27.06.2022 - [Newspaper article, Gießener Allgemeine](#):

"Störungsfläche« und Denkanstoß. Der »Planetary Forest« im Botanischen Garten."

26.06.2022 - [Newspaper article, Gießener Allgemeine](#):

"Kunst und »fremde« Natur."

14.06.2022 - [Newspaper article, Gießener Allgemeine](#):

"Waldkunst für den Botanischen Garten."

11.04.2022 - [Press release, Justus Liebig University Giessen](#):

"Planetare Materialien – Denkanstöße zu einem neuen Blick auf unseren Planeten Erde. Innovatives Stipendienprogramm Planetary Scholars and Artists in Residence gestartet."

03.03.2022 - [Newspaper article, Gießener Anzeiger](#):

"Anderer Blick auf den Planeten."

22.04.2020 - [Press release, Justus Liebig University Giessen](#):

"Den Planeten Erde in seiner Gesamtheit in den Blick nehmen. Panel on Planetary Thinking an der Justus-Liebig-Universität Gießen nimmt Arbeit auf – Komplexe Phänomene wie Biodiversität, Klima, Ungleichheit aus einer Gesamtperspektive beurteilen."

Panel on Planetary Thinking
Liebigstrasse 35
35392 Giessen
☎ +49 641 99-16191
panel@planet.uni-giessen.de



Cover image: Scandinavia at Night © NASA

This report was compiled and designed by Aravindi Muthuwahandi in May 2023.