

ACTIVITY REPORT 2021-2024

# PANEL ON PLANETARY THINKING

RESEARCH-ORIENTED THINK TANK AT JUSTUS LIEBIG UNIVERSITY GIESSEN



planetary  
thinking



# CONTENTS

1. Overview .....	5
2. Core Managing Team .....	8
3. History & Mission .....	10
4. Activities .....	11
4.1 International Fellowship Program .....	11
4.2 Art Projects .....	36
4.3 Planetary Futures Competition .....	50
4.4 Scientific Outreach .....	52
4.5 Excursions .....	64
4.6 Forthcoming Events .....	72
5. Publications .....	73
6. Panel in the Media.....	79



The Panel on Planetary Thinking was founded in 2020 as a research-oriented think tank at Justus Liebig University Giessen, Germany. Initially funded by the German Research Foundation (DFG) until 2025, it received additional funding by the Hessian Ministry of Higher Education, Research, Science and the Arts from 2022-2025. It constitutes a central organizational unit in the field of sustainability within the university's development plan until 2030.

The Panel conducts transdisciplinary scientific research on planetary thinking, a novel approach that moves away from anthropocentrism and conceptions around the 'globe'. This booklet gives an overview of the range of activities the Panel carries out, which include an international fellowship program, a range of scientific outreach formats, workshops, and exhibitions. Furthermore, the Panel provides seed funds for emerging third-party funding projects.

Planetary thinking means to acknowledge that human societies are deeply entangled with the life of an ever-changing planet—a planet that expands spatially from the Earth's core to interplanetary space, temporally from nanoseconds to geologic time scales, and materially from elementary particles to the dark matter of the universe.



North Africa and Europe from the satellite Suomi NPP © NASA

WORLD - EARTH - GLOBE?

# PLANET

There are many ways to talk about planet Earth; as Earth, world, or globe. All these types of descriptions focus on different properties:

When we speak of the Earth, we often mean its biological or geological description. We understand them as the physical basis of human life.

The world, on the other hand, forms a political stage and a cultural space. This is based on ideas of cosmopolitanism and thus of a universal moral order.

The understanding of the globe is shaped by ideals of control and regulation, as well as notions of economic unification.

These concepts contain assumptions that hide important connections from view.



A fourth dimension is therefore important in planetary thinking: the planet should “overwrite” the globe.

The planet is a category that follows its own logic beyond the division into political, geological or economic areas. Instead of control, there is a need to think about how to make the planet habitable. What can we do to maintain or even expand the hospitality of the earth?

Against this background, humankind should no longer see themselves as global players but as planetary subjects.

## 2. CORE MANAGING TEAM



**CLAUS LEGGEWIE**  
**Cofounder & Scientific Director**

Claus Leggewie is a holder of the Ludwig Börne professorship and recipient of the Cross of Merit 1st Class of the Order of Merit of the Federal Republic of Germany. He focuses on the planet-society interrelations and has had numerous work published ranging from energy transition to climate politics to the Anthropocene.

**FREDERIC HANUSCH**  
**Cofounder & Scientific Manager**

Frederic Hanusch is a research fellow of the Earth System Governance project and currently a fellow at THE NEW INSTITUTE, Hamburg. His research is focused on the intersections of democracy and planetary change. He is currently working on a book entitled *The Politics of Deep Time* to explore how planetary temporalities can be institutionalized in governance systems.



**LIZA B. BAUER**  
**Interim Scientific Manager**

Liza Bauer's research focuses on critical animal studies, particularly she is interested in exploring and critiquing the ways in which relationships between humans and so-called farm animals are perceived and practiced. She explores the potentials and limitations inherent to literary texts in terms of expressing planetary phenomena and interconnections.



**CLEMENS FINKELSTEIN**  
**Scientific Researcher**

Clemens Finkelstein is a historian of the built environment and theorist in the planetary humanities. He is a Ph.D. candidate in the History and Theory of Architecture at Princeton University, a PIIRS Fellow at the Princeton Institute for International and Regional Studies, and a Scientific Researcher ["Planet as Method" project] as well as Affiliated Fellow at the Panel on Planetary Thinking.



**KATHARINA ENDRES**  
**Project Assistant**

Katharina Endres is responsible for the organizational support of the visiting scholars and artists and for project assistance and administrative work, as well as for organizing workshops and seminars.

**MEIKE WIEGAND**  
**Research Assistant**

Meike Wiegand is a research assistant at the Panel with a focus on the philosophy of science and biology. She is currently researching the influences of narratives and metaphors on research in molecular biology. Her work mainly consists of outreach and research assistance.



**ARAVINDI MUTHUWAHANDI**  
**Research Assistant**

Aravindi Muthuwahandi is a research assistant at the Panel with a focus on political economy and sustainability studies. Her tasks mainly includes assisting the fellowship program and research work.

### 3. HISTORY & MISSION

The Panel on Planetary Thinking was established at Justus Liebig University Giessen on 1 April 2020. The primary objective of the Panel is to bundle up the interdisciplinary and transdisciplinary knowledge at the university to contribute to the international debate on planetary thinking through the university's own research perspective.

On 19 June 2020, the Panel officially held its first cross-disciplinary colloquium in Giessen with the participation of about 30 members of the university from the fields of humanities, social sciences, cultural studies, natural and life sciences. The activities are conducted in accordance with the Hessian Higher Education Agreement 2021-2025.

The Panel also provides the university with scientific support for concept development and strategy formation in the field of sustainability to realize a university-wide sustainability strategy. This is set out in "The Development Plan of Justus Liebig University Giessen: JLU 2030".



Planetary thinking essentially views that humans are not at the center of Earth's existence but share it with other living beings, non-living beings and forms of energy as parts of an ever changing planet.

Our Galaxy, the Milky Way © NASA

## 4. ACTIVITIES

The Panel coordinates a range of activities to engage the public with its research and artistic practices – an international fellowship program, a lecture series, workshops, exhibitions, and excursions – and collaborates with university and non-university institutions in this endeavor.

### 4.1 INTERNATIONAL FELLOWSHIP PROGRAM

The **Planetary Scholars & Artists in Residence Program** (2022-2025) constitutes a central part of the Panel's activities. Every year, the international fellowship program provides scholars and artists from different disciplines with the conditions and resources to realize transdisciplinary projects. The aim is to explore how academia and the arts engage with and portray the relationships between societies and the planet.

The fellows are given the space to collaborate on “planetary projects” that focus on the themes of Planetary Materials (2022), Planetary Spaces (2023), Planetary Times (2024), Planetary Agency (summer term 2025), and Planetary Politics (winter term 2025). Central outcomes of these projects are workshop series and exhibitions that seek answers to questions, such as:

- How did planetary forces form us? How did different societies acquire planetary forces that are capable of transforming Earth?
- How can different societies deal with irregular-regular planetary changes that are beyond their influence? What does it mean to have such planetary power, how should it be deployed and when should it be withheld?
- Which planetary forces beyond our influence can we anticipate? Which planetary dynamics can we ally or reunite with, and which alliances should we quit (if possible)?

The Panel welcomed the first cohort of fellows; Claudia Hartl, Clemens Finkelstein, Mathias Kessler, and Claudia J. Ford who researched on a range of questions around forest dieback, vibrations, climate grief, and climate change.



### CLAUDIA HARTL

Dendrochronologist/Geographer

#### **Project: Tree-Ring Reports on Forest Dieback**

The extremely hot and dry summers of 2018, 2019 and 2020 had serious impacts and led to numerous tree die-off. In order to investigate the current forest dieback in more detail, dead and living trees were dendrochronologically investigated in this project.



### CLEMENS FINKELSTEIN

Architect/Philosopher

#### **Project: Urelement - Vibration as Planetary Transmaterial**

The project engaged the planetary entanglements of vibration via architecture, which operates as agential media between the built and natural environment.

It investigated historical conceptualizations of vibration as a planetary transmaterial and linked them to contemporary developments and debates that seek to recalibrate humanity's essential relationships with its surroundings.



## MATHIAS KESSLER

Artist/Filmmaker

### **Project: Rosbach vor der Höhe - An Area of Destructed Woodland**

Rosbach vor der Höhe is a forest near Frankfurt that stands as a symbol of the future. It embodies the effects of climate change. Where does art fit into such challenging conditions? The project invited people to experience a forest that is in the process of collapsing; from decomposition to recomposition [see page 36 for a detailed account].



## CLAUDIA J. FORD

Visual Artist/Teacher

### **Project: What Earth is Made of - Planetary Materials, Indigenous Knowledge, and the Gaia Hypothesis**

Conceiving of the planet as Gaia, a “self-regulating complex system” or super-organism, maps onto the indigenous ecological thinking about human/planetary interactions and the cosmology that describes kincentric ecological relationships between humans and the planet.

The participatory artwork **Planetary Forest: Bring the Forest into the Garden** was jointly realized by Claudia Hartl, Clemens Finkelstein and Mathias Kessler. The forest sculpture is on view for the public at the Botanical Garden Giessen. In winter 2022, Claudia J. Ford's art exhibition on **Planetary Origin Stories** at MAGIE - Makerspace Giessen was open to the public following a grand reception [see page 36 for a detailed account on the art projects of the fellows].

As the second cohort of fellows, the Panel welcomed Adenike Titilope Oladosu, Jason Waite, and Juan Pablo Pacheco Bejarano. In addition, the Panel awarded a publication fellowship to Sibylle Anderl.



### ADENIKE TITILOPE OLADOSU

Ecofeminist/Climate Justice Leader

#### **Project: Using Earth Observation to Restore Shrinking Planetary Spaces**

A Case Study of Lake Chad



The project utilized remote sensing technologies such as Earth observation (EO) satellites to examine Lake Chad as a severely threatened planetary space from the distance and to communicate insights to the wider public.



### JASON WAITE

Curator/Writer

#### **Project: Non-Human Flourishing in Toxic Planetary Spaces**



Within the radioactive Fukushima exclusion zone, domestic pigs released by evacuated farmers have mated with wild boars, forming a new hybrid species. The project explored the hidden lives of these boars through an interdisciplinary analysis of new video footage from cameras installed in the zone.

Simultaneously, these more-than-human's adaptations to toxic zones were explored by making a comparison with the same species found in Hessen.



## JUAN PABLO PACHECO BEJARANO

Visual Artist/Writer

### **Project: Environmental Identities at the Ocean Floor**



The project explored the forms of life and the flows of energy that thrive on the ocean floor, and their influence on our lives and identities on the planet's terrestrial surface. It focused on scientific and theoretical discussions around Eurythenes Plasticus, a marine crustacean found at the deepest region of the Mariana Trench and on submarine cables, a deep-sea information infrastructure that increasingly mediates the virtual worlds we inhabit.



## SIBYLLE ANDERL

Astrophysicist/Philosopher

### **Project: The Sun. A Discovery**

The publication project looked at the history of the sun's discovery from three angles: (1) it described how the sun was discovered and what humanity knows about it today; (2) it examined the forms of "sunrise" in cultural ideas and practices; and it asked (3) how far "solar power" might open up sustainable ways of living.

For its third round, the Panel offered the fellowships to Connor Cook, Aisling O'Carroll, Charlotte Wrigley & Lukáš Likavčan. In addition, the Panel awarded a publication fellowship to Christian Kosmas Mayer.



### CONNOR COOK

Media Artist/Researcher

#### **Project: Bioreactors and Biospheres**

An Audiovisual Exploration of Evolution as Planet-building



From the origin of life to the emergence of complex species, the evolution of life on earth has been driven by a corresponding evolution of information, in the way that it is stored, transmitted, and processed.

The recent emergence of computation buildsthis evolutionary lineage weaving together biological and technological domains through informatic feedback loops. The project replicated this recursive dynamic on a micro-scale, using a Raspberry Pi-enabled bioreactor [Pioreactor] combined with an immersive audiovisual software environment.



### AISLING O'CARROLL

Designer/Researcher

#### **Project: Reconstructing Planetary Timescales at the Unteraargletscher**

The artistic project aims to explore how techniques of reconstruction, drawn from geology, architecture, and archaeology, can translate knowledge about geological histories and the relations between planetary and human timescales. Through a case study investigation of the Unteraar glacier, observations from fieldwork and research will be used

to produce a series of maps, models, and animations that examine different histories and layers of the site.





## CHARLOTTE WRIGLEY

Researcher/Author

### **Project: Eternity in the Anthropocene**

Freezing Time in a Thawing World

The project critically interrogates the word ‘eternity’ through a comparative analysis of two so-called eternal timeframes: that of the permafrost which is thawing rapidly due to global heating, and cryobanks that promise temporal preservation through cold storage methods. The project is rooted on the case studies of the unfinished Soviet ‘Subterranean Museum of Eternity’ sunken into a permafrost tunnel, and Europe’s only human cryopreservational facility ‘Tomorrow Biostasis’.



## LUKÁŠ LIKAVČAN

Philosopher

### **Project: Comparative Planetology of History**

The project combines situated methods of philosophical writing with elements of multimodal, collaborative knowledge-making. The main claim of this project is that planets are in essence historical, dynamical entities – they exist as concentrated crystallization of cosmic time. Elaborating on the author’s previous work, the project uses the astronomical perspective to think about history in plural – i.e. to make a comparative study of planets in terms of their histories, which are contingent on different initial parameters the host solar system affords.



## CHRISTIAN KOSMAS MAYER

Artist/Researcher

### **Project: De-Extinction**

The publication project delves into the transformative domain of "de-extinction," a scientific venture where cutting-edge techniques such as genetic engineering and cloning are utilized to revive species that have vanished from our planet. Artist Christian Kosmas Mayer and cultural-environmental geographer Adam Searle synergize their expertise in artistic research, continental philosophy, and social science to navigate and elucidate this new intermediate state that straddles the boundaries between life and death, offering a fresh perspective on existence.

The Planetary Workshop Series constitutes an integral part of the **Planetary Scholars and Artists in Residence Program**. Each semester, the visiting scholars and artists prepare a workshop of one or more days with reference to the fellowship theme and their own focal points. It features exciting content, creative formats, and unusual perspectives that the fellows realize either individually or collaborating with each other. The workshop series engages the public on a wide scale as the Panel collaborates with many university and non-university bodies to realize the events.

### **Planetary Forest - Bring the Forest into the Garden**

*workshop & exhibition*

June 23-25, 2022

The fellows working on the topic "Planetary Materials", Claudia Hartl, Clemens Finkelstein, and Mathias Kessler, employed different perspectives for their collaborative event. As an integral part of trees, **wood** became the planetary material of the semester as well as the central leitmotif for the workshop. The fellows explored the planetary dimension of human-forest-climate interactions in the Rosbach City Forest whilst providing their expertise to the participants.



The group gathers in front of the disturbance area as Hartl & Rosbach Mayor Steffen Maar explain its history, climatic conditions & measures for its reforestation © Mörzdorf



Mathias Kessler films the group at the lookout of the quartzite plant while Clemens Finkelstein gives insights into current and historical forest use © Mörsdorf



Claudia Hartl takes a core sample from a beech © Mörsdorf

The participants and fellows alike collected forest material for the living sculpture planned by Mathias Kessler: litter, dead wood, topsoil, roots and even the odd seedling. The following day, the fellows designed the living sculpture as an image of a forest habitat in the Botanical Garden Giessen.



Unloading the collected material in the Botanical Garden © Mörsdorf



The fenced-off sculpture to protect it from human and animal influence © Mörsdorf



Mathias Kessler and Claudia Hartl ceremoniously open the joint work of art © Mörsdorf

For two weeks, the Neuer Kunstverein Giessen also hosted an accompanying exhibition at its premises, which documented the work of the three fellows (see page 36 for a detailed account of the art projects).



"Planetary Forest" exhibition at Neuer Kunstverein Giessen © Mörsdorf

## **Planetary Materials Workshop Series "What Earth is Made of"**

*excursion, lecture & film screening, creative writing workshop and exhibition*  
October 18 & November 10-11, 2022

Claudia J. Ford's workshop series focused on our relationship to planetary materials. The series reflected on James Lovelock's Gaia hypothesis from an indigenous perspective to deepen our understanding of planetary materials and their constellations through art and science. The series connected indigenous ideas about ecology with the climate crisis and engaged the participants in storytelling through all of the senses – hands on farm labor, film, creative writing, lectures, listening, dialog, and an exhibition of climate change and planetary materials inspired visual art.

The workshop series commenced with an excursion to JLU's Gladbacherhof farm (for a detailed account, see page 66). The focus was on one of the most fundamental relationships between humans and the environment – namely food production and nutrition.



Farm manager Johannes Eisert leads the group through the new research barn at Gladbacherhof © Bauer

On November 10, Ford delivered a stimulating hybrid lecture on indigenous knowledge and Gaia hypothesis as second event of the workshop series took place. The lecture was followed by the film screening of the documentary “Inuit Knowledge & Climate Change” (2010), the first ever Inuktitut language film directed by Zacharias Kunuk and Ian Mauro. The film took the viewers on a journey with the Inuit elders and hunters whilst exploring the social and ecological impacts of a warming Arctic.



James Lovelock Memorial Lecture © Mörsdorf

On Nov. 11, Ford conducted a writing workshop to express climate grief through creative arts. Participants got an opportunity to practice creative nonfiction environmental writing using planetary materials, which they found in their immediate environment as prompts.





Creative writing workshop on climate grief © Wiegand

The workshop series came to a conclusion with the opening of the exhibition “Planetary Origin Stories”: a collage exhibit at MAGIE - Makerspace Gießen created by Ford (see page 42 for a detailed account of Ford's art project).



Artist's Talk by Ford during the opening of her exhibition 'Planetary Origin Stories'  
© Mörsdorf

## **Planetary Spaces Summer Workshop: “Shrinking Spaces & Toxic Zones”**

*workshop & mini-exhibition*

June 1-2, 2023

As part of their two-day workshop series at castle Rauischholzhausen, Adenike Oladosu & Jason Waite called for a planetary perspective of three different spaces: the severely endangered Lake Chad, the Fukushima exclusion zone following the nuclear disaster, and a Hessian forest area near Biebertal.

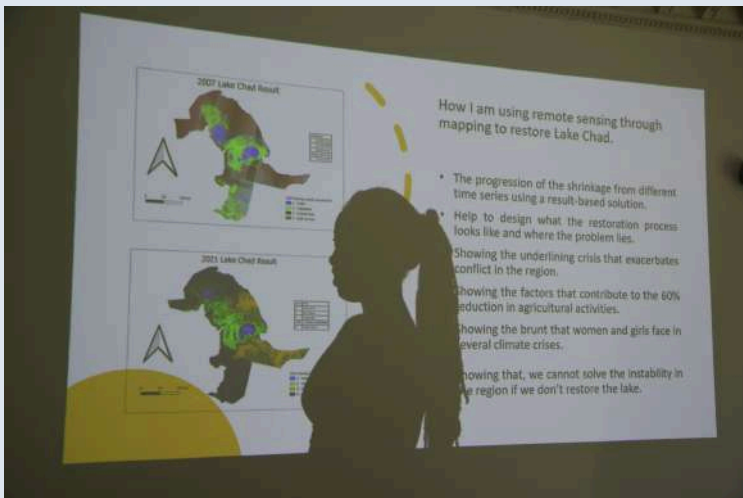
Through lectures, discussion rounds, workshops, and a mini-exhibition, Oladosu and Waite provided the participants with insights into the impacts of long-term environmental disasters on planetary spaces and their human and more-than-human inhabitants. This was followed by a comprehensive art installation of fellows' projects and the results of the workshop at Kunsthalle Giessen from July 6-11, 2023 [see page 45 for a detailed account of the exhibition].



The group posing for a commemorative photo at Castle Rauischholzhausen

The morning of June 01 was dedicated to the topic “Shrinking Spaces: From Mega-Chad to Lake Chad”. Nigerian climate activist, Oladosu showed the participants satellite images of how rapidly Lake Chad has been shrinking since the 1960s. The participants gained an in depth insight into the complex social and ecological conflicts around the lake, which is the basis of life for countless people. To counteract the complete disappearance of Lake Chad, Oladosu called for more responsibility in the Global North to address the climate crisis, as it contributes significantly to the drying up of Lake Chad.

The discussion was followed by a mini-exhibition at the castle. The participants could once again engage with the topics of the workshop through a poster exhibition, a video installation, a VR simulation, and Ford's Book of Condolences on climate grief (see page 42 for a detailed account of Ford's exhibit).



Oladosu explaining the use of remote sensing to map the drying up of Lake Chad and measures to restore this planetary water space © Endres



From left to right: Claudia J. Ford (alumna from "Planetary Materials" fellowship cohort), Adenike Oladosu & Jason Waite discuss the impact of climate change and long-term catastrophes on mental health © Bauer



Liza Bauer and Frederic Hanusch experience the VR simulation of the Fukushima exclusion zone © Endres

The second day focused on the more-than-human inhabitants of planet Earth. Waite showed the participants astounding wildlife camera footage from the exclusion zone around Fukushima, which has become a home to a variety of animals in the absence of humans.



Guest speaker Kieran O'Mahony [right] sharing his expertise on adaptation strategies of wild boars and other more-than-human species © Endres

The program was rounded off with a joint drawing workshop on the topic of “Imagining More-Than-Human Infrastructure”. The participants' imagination was required as they collectively drafted sketches of how a farm in Fukushima could be redesigned to provide a shared home for humans and animals to thrive freely.



Imagining infrastructure for a harmonious human and more-than-human space © Bauer

## Planetary Spaces: wet workshop

*workshop*

November 2-4, 2023

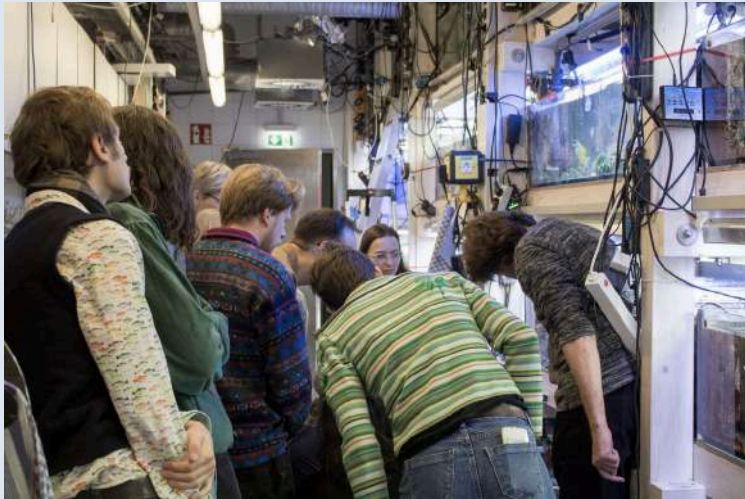
Juan Pablo Pacheco Bejarano's "Planetary Spaces" fellowship focused on a journey to understand our relationship to the ocean floor, and what it can teach us about our chances for survival in the face of conditions such as microplastic pollution and ocean acidification. To address this from the coastless city of Giessen, Pacheco Bejarano's three-day wet workshop created an open (in)disciplinary space to relate to the multiple bodies of water within and around us. Following the workshop, a complementary audio-visual installation was also showcased (see page 48 for a detailed account).



The group posing in front of Lahnfenster Hessen

The workshop started with a guided tour of Lahnfenster Hessen, the observation station at a fish pass in Giessen. The tour offered a glimpse to the underwater world of the Lahn through the large windows installed to observe the fish in their natural environment. Afterwards, a somatic reading session was conducted from Pacheco Bejarano's *wet reader* focusing on the issues of hydrocommons and colonialism. The group then took a stroll by the Lahn in the evening whilst deep listening to the river using a hydrophone.

The second day of the workshop took the group to the aquarium *Ocean2100* at the Systematics & Biodiversity Lab of the JLU. Prof. Dr. Thomas Wilke gave an introduction to the aquarium; a global change simulator that exposes stony corals and other organisms living in coral reefs to global change scenarios. He emphasized on the importance of artists creating a transdisciplinary discourse to carry the important scientific messages of conservation of corals to the wider public. Dr. Patrick Schubert then gave the group a guided tour of the aquarium.



Dr. Patrick Schubert giving a guided tour of aquarium Ocean2100 © Wiegand

The group engaged in a somatic reading session at the aquarium before going to the Bergwerkswald ponds, bodies of water that emerged out of bomb craters from World War II. Here, the participants got an opportunity to write a toxic love letter to their favorite body of water. The day came to a close with Prof. Dr. Klement Tockner's (Senckenberg Society on Nature Research) lecture on "Water as an Engineered Planetary Space" at Kunsthalle Giessen (for a detailed account see [54](#)).

On the final day of the workshop, Pacheco Bejarano conducted floating and underwater communication exercises at the indoor swimming pool at Giessener Bäder.



Floating exercises at Giessener Bäder © Bauer

The workshop came to a conclusion with the somatic dance exercise led by Colombian choreographer Catalina Insignares. The participants connected to their bodies as liquid tissues and to the watery origins of life. The sensorial experience was complemented with Pacheco Bejarano's performance of his waterphone (Ocean Harp).



Somatic listening to the liquid tissues of the body © Wiegand



## Planetary Times: Bioreactors & Biospheres An Audiovisual Exploration of Evolution as Planet-building

*workshop & audiovisual performance*

May 28-29, 2024

Connor Cook's two-day workshop in collaboration with Darren Zhu (synthetic biologist) took the participants through what they call "the informatic evolution of the planet". Starting the discussion on the origins of life in the emergence of single-cell and multicellular organisms and delving into the emergence of complex species, Cook and Zhu argued that Artificial Life (A-Life) and Artificial Intelligence (AI) continue this evolutionary lineage.

The event included a roundtable discussion, a film screening, a hands-on experiment with the video game software Unreal Engine taking input from a Raspberry-Pi enabled bioreactor (Pioreactor), and an audiovisual performance by Cook on the "bios-technosphere."



The group poses for a commemorative photo © Kunsthalle Giessen

Day one of the workshop set the theoretical and scientific foundation with a roundtable discussion on the topic "Informatic Evolution of the Planet". The evolutionary lineage that weaves together biosphere and technosphere through informatic feedback loops was discussed at length by Dr. Cécile Malaspina (Collège International de Philosophie, Paris), Dr. Jochen Blom (JLU) & Christina Lu (Oxford University) representing the fields of philosophy of science, computational biology, and AI research, respectively.

Day one closed after the screening of Cook & Zhu's movie Xenoplex (or the Xenobiology Multiplex). The computational simulation is a speculative experimental design that leverages the most recent transition (planetary computation) in order to elucidate the first transition (origins of life).



The roundtable discussion on the Informatic Evolution of the Planet © Kunsthalle Giessen

Day two of the workshop started with Cook conducting an intensive practical session, giving 1:1 support to the participants on how to create audiovisual worlds using the Unreal Engine. The workshop was focused on replicating planetary dynamics on a micro-scale using the Pioreactor that cultivated, monitored, and controlled cultures of algae to create immersive audiovisual worlds.

By algorithmically adjusting and monitoring the balance of light, nutrients, carbon dioxide, and algal growth, the Pioreactor acted as a simplified planetary model, illustrating the intricate interplay of biological matter, energy, and information within the Earth system. Connecting the Pioreactor to the Unreal Engine, the participants used the real-time data produced by algae as input to create their own vibrant, audiovisual worlds.



Cook demonstrates how to create audiovisual worlds using the game engine Unreal © Wiegand

The workshop ended with an artist's talk and a spectacular audiovisual performance by Cook that he had developed using the Unreal Engine which transported the audience to a bios-technosphere.



Bios-technosphere - an audiovisual performance by Cook © Wiegand

## 4.2 ART PROJECTS

In connection to their participatory workshops, the visiting fellows at the Panel initiate and realize art projects of different formats.

### Forest sculpture - “Planetary Forest: Bring the Forest into the Garden”

The sculpture is the result of the collaboration of the very first round of fellows; Claudia Hartl, Mathias Kessler and Clemens Finkelstein in 2022. Placed at the Botanical Garden Giessen, the ‘Planetary Forest’ sculpture portrays the scientific and cultural-technical construction of “natural” worlds. In this artwork, the regional forest soil is relocated and recreated as a living sculpture. The “planetary material” comes from an ecologically disturbed forest area in the city of Rosbach vor der Höhe in Hessen, which is severely affected by forest dieback. The sculpture carries the natural forest to the human-made world of the botanical garden.



Planetary Forest Sculpture © Muthuwahandi

It serves as an ethical, aesthetic, ecological, and political disruption that informs the visitors on the topic of forest dieback and the artificiality of nature. The artwork sparks discussions on the harmful impacts of climate change and human societies on local forests, reflected on in a planetary context.

The fenced-off piece of the disturbed forest site will remain untouched for three years. The Panel makes close observations to record how different species would thrive in this living sculpture. Will the forest make its way into the garden, will the garden reclaim the area, or perhaps nothing will happen for a while?

### **Keeping a close inspection of the sculpture**



Planetary Forest Sculpture photographed in July 2022 © Bauer



Planetary Forest Sculpture photographed in September 2022 © Bauer



Planetary Forest Sculpture photographed in December 2022 © Muthuwahandi



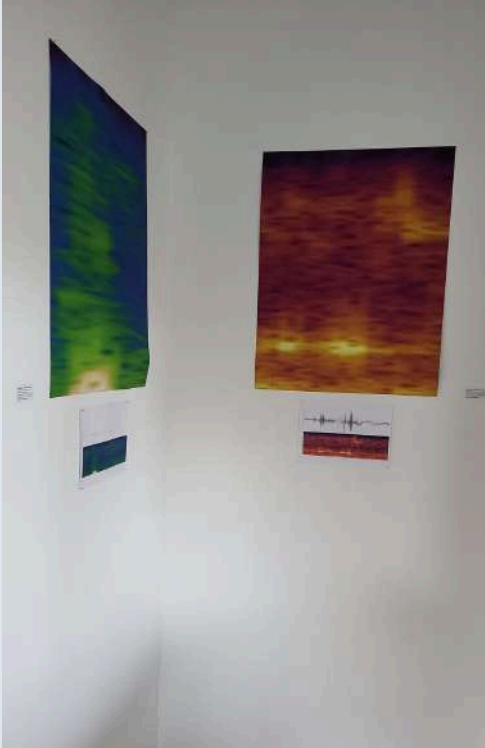
Planetary Forest Sculpture photographed in June 2023 © A. Endres



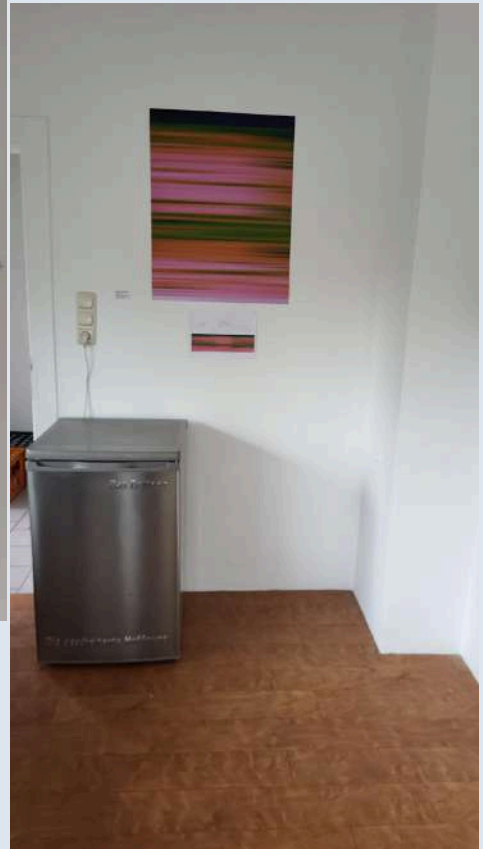
Planetary Forest Sculpture photographed in May 2024 © Muthuwahandi

## Complementary Exhibition “Planetary Forest” at Neuer Kunstverein Giessen

An exhibition complementing the installation of the 'planetary forest' sculpture was showcased at Neuer Kunstverein Giessen which documented the progression of the projects of the three fellows in the Planetary Scholars & Artists in Residence Program.



Vibratory signatures © Bauer

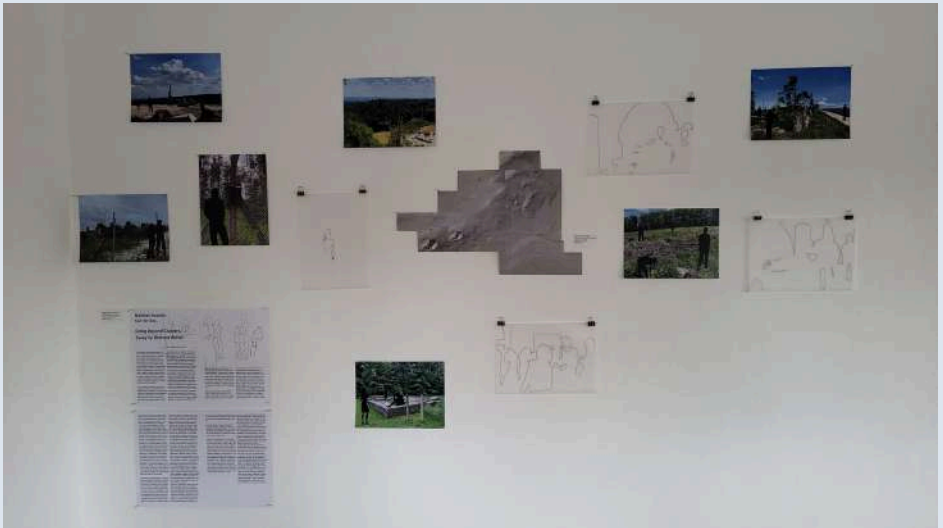


Vibratory signatures and art refrigerator © Bauer





A piece of forest from Rosbach City Forest's dieback displayed at the exhibition © Bauer



Documenting the process of the fellows' projects © Bauer

## Exhibition “Planetary Origin Stories” at MAGIE - Makerspace Giessen

“Planetary Materials” fellow Claudia J. Ford’s workshop series “What Earth Is Made of” came to a grand conclusion with the opening of the exhibition “Planetary Origin Stories”: a collage exhibit at MAGIE - Makerspace Gießen.

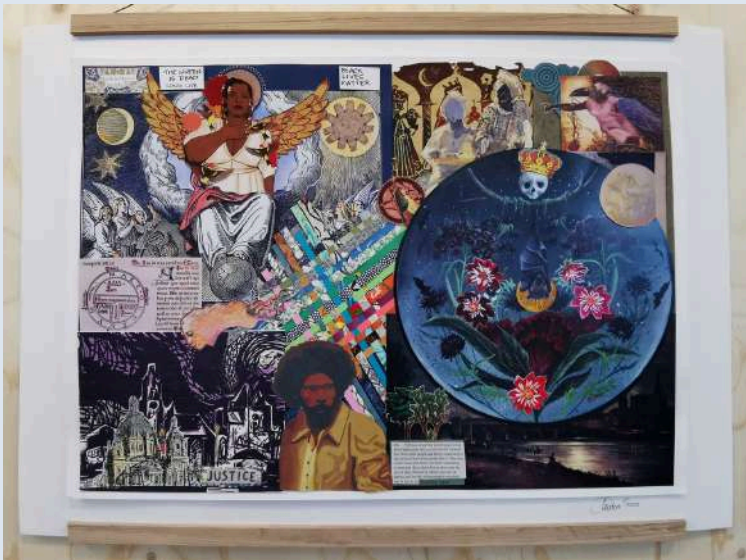
The exhibit was intricately woven around the subject matter of ecological destruction and climate grief. The beauty and finesse of Ford’s pieces paid tribute to the color, shape and form of the natural world and recounted our collective responsibility to safeguard the Earth’s beauty and resources.



Book of Condolences; a story of climate grief compiled by Ford © Wiegand



"The Cosmic Show": collage exhibit by Ford © Wiegand



"Death of the Queen": collage exhibit by Ford © Wiegand



"The Alchemy of DNA": collage exhibit by Ford © Wiegand



"The Planetary Garden": collage exhibit by Ford © Wiegand

## Long-Term Project “More-Than-Human Worlds in Fukushima: Don’t Follow the Wind”

The long-term collective project “Don’t Follow the Wind” explores the long-term environmental crisis in the coastal Japanese region through this ongoing, inaccessible exhibition, which maintains traces of human presence amid the fallout of the March 2011 nuclear reactor meltdown in the Fukushima exclusion zone that displaced entire towns. What can art do in a continuing catastrophe when destruction and contamination have made living impossible?

The collective “Don’t Follow the Wind” includes curator and writer Jason Waite, fellow in the second cohort of the Planetary Scholars & Artists in Residence Fellowship Program on Planetary Spaces (summer 2023). Although the exhibition opened in March 2015, the zone is still inaccessible to the public—the exhibition, like the radiation, is virtually invisible. In the long interim, while people can’t visit, the collective started noticing traces of more-than-human visitors to the exhibition such as wild boars, raccoon dogs, and monkeys. The group has been collaborating with scientists and researchers to learn more about this present more-than-human community in order to think toward a future co-existing with returning human residents. The Panel on Planetary Thinking is a supporting collaborator in this ongoing research.



The curatorial team on a site visit in the Fukushima exclusion zone © Don’t Follow the Wind



A raccoon dog captured by a trail camera at the exclusion zone © Don’t Follow the Wind

## Exhibition “Unstable Planetary Spaces”

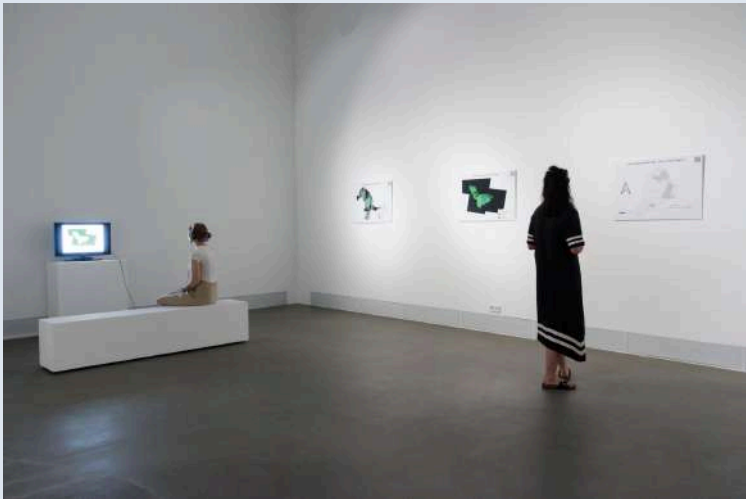
From 6-11 July 2023, the exhibition “Unstable Planetary Spaces” at Kunsthalle Gießen explored how artists and activists grapple with some of the most challenging long-term disasters of recent times: the shrinking of Lake Chad due to human induced climate change and the irradiated Fukushima exclusion zone after the 2011 nuclear disaster in Japan. The event showcased the works of the “Planetary Spaces” summer fellows; Adenike Titilope Oladosu and Jason Waite along with the works of Eva & Franco Mattes (Don’t Follow the Wind) and Ahmet Öğüt.



Exhibition “Unstable Planetary Spaces” © Endres



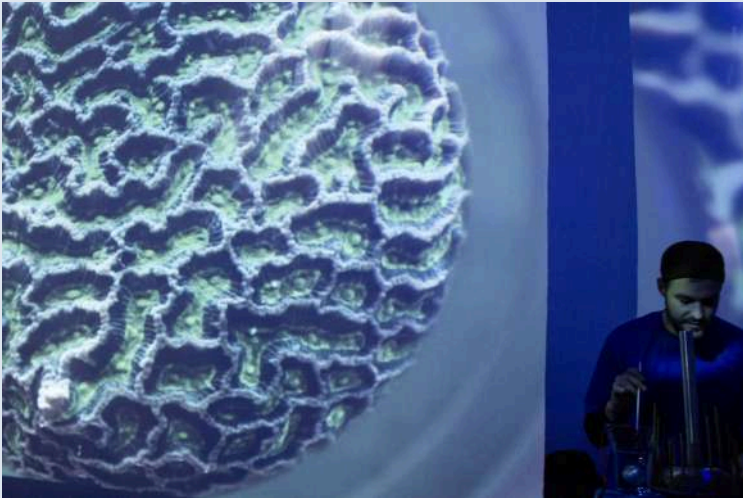
Audio-visual experience of human and more-than-human life in the Fukushima exclusion zone © Endres



Exhibition room with satellite images and video installation of shrinking of Lake Chad © Endres

## Exhibition “vibrating bodies of water”

The audio-visual installation emerged complementary to “Planetary Spaces” winter fellow Juan Pablo Pacheco Bejarano’s “wet workshop”. It invited visitors to experience water as a planetary space through deep listening, offering a melodic and imaginative path to heal our relationship with the deep sea. Pacheco Bejarano explored sound as a medium to reimagine how we relate to the forms of life and the flows of energy that thrive on the ocean floor. From corals and microplastics, to deep-sea mining and global warming, the installation asked: How can we reimagine our relationship to the ocean floor, and what can it teach us about our chances for survival?



Video installation showing a stony coral © Neuer Kunstverein Giessen

Pacheco Bejarano engaged the audience in a form of guided meditation session where the audience was asked to imagine themselves as a coral that has swallowed a piece of microplastic that has now lodged in the coral’s heart. The empathetic act of being and feeling a coral did a deep delving into the heart of the issues Pacheco Bejarano addressed throughout his workshop. The installation was accompanied by a live performance, where Pacheco Bejarano played his own version of an Ocean Harp.





Visitors engaging in a guided meditation imagining themselves as a coral © Neuer Kunstverein Giessen



Pablo Pacheco experimenting with his Ocean Harp © Neuer Kunstverein Giessen

## 4.3 PLANETARY FUTURES COMPETITION

The Planetary Futures Competition (2022-2025) provides financial support for transdisciplinary research projects that are in the initial stages of applying for external funding. The objective of the competition is to support explorative and ambitious research projects that apply innovative approaches and methods that reach beyond disciplinary boundaries. The winners of the 2022 competition are in the process of developing a 'Planetary Pedagogy' that seeks to enable students of applied theatre studies to grapple with planetary crises in their artistic and academic work.

### Planetary Futures Competition Vol. I (2022)

#### Planetary Pedagogy - Performance and Education in Times of Ecological Catastrophes

A series of workshops were conducted exploring the relation of artistic practices to planetary and ecological forms of knowledge. The workshops included bodily, sensational, affective practices as well as forms of play and storytelling. The aim was to share practices developed in the field of performance art to explore the possibilities of a planetary pedagogy, working across art, activism, community gatherings, universities, and other educational contexts.



Sitting on the ground of the theatre lab, the participants contemplate what the concept of "the Planetary" means for each one of them personally © Bauer

### Urban Greening

In 2023, Prof. Dr. Mirjam Stockburger and Lukas Spatz from the Department of Economics at Justus Liebig University Giessen receive funding from the Panel for a proposed project that seeks to evaluate the impact of urban greening projects on people's health and well-being, the housing market and municipality finances.

The project will utilize a novel approach to examine causal effects by studying the award procedure of national and state garden shows using data combinations. It explores the conception of environmental justice by specifically analyzing the consequences of such greening events on the landscape, studying the effects of such green, public goods on economic outcomes (such as housing prices, local economy), and by analyzing their impacts on inhabitants' health and well-being as well as on socioeconomic disparities.



© North News and Pictures Ltd.

## 4.4 SCIENTIFIC OUTREACH

In the shape of lectures, colloquia, and publications, the Panel communicates the outcomes of its research activities to the scientific community and beyond.

### Planetary Lecture Series

The Panel organizes biannual hybrid lectures, for which it invites experts from different fields to introduce and discuss a topic of planetary relevance. Recordings of the events are available for streaming on the Panel's YouTube channel.

#### **Planetary Lecture #1 | Planetary Law for the Anthropocene by Prof. Dr. Dr. Louis Kotzé**

Faculty of Law, North-West University, South Africa



The lecture addressed the question: how can the existing Holocene international environmental law regime be re-imagined in order to provoke a long overdue paradigm shift that is able to confront the Anthropocene's deepening socio-ecological crisis within a planetary context?



#### **Planetary Lecture #2 | Sturmnomaden. Der Klimawandel verlangt eine neue Migrationspolitik**

**German lecture by Dr. Kira Vinke**

Center for Climate and Foreign Policy at the German Council on Foreign Relations



A lecture on the issue of the need for a policy that recognizes climate change and biodiversity loss as reasons for flight, prompting to take a fresh look at the issue of global migration.



## **Planetary Lecture #3 | Drift as a Planetary Phenomenon** **by Prof. Dr. Bronislaw Szerszynski**

Department of Sociology, Lancaster University, United Kingdom



A lecture-performance on 'drift' as a primordial form of motion within the extended body of the Earth. What can balloons and other drifting things tell us about the planetary conditions for motion? How do living and non-living entities engage in 'driftwork', in which drift is subsumed within a wider set of purposes or functions? How can drift remind us of our debt to the planetary mobility commons – the Earth seen as a storehouse of accumulated experiments and potentialities?

## **Planetary Lecture #4 | Planetary Intersectionality** **Feminism, Impermanence and the Radicalness of Simplesness** **by Minna Salami**

THE NEW INSTITUTE, Hamburg



After making the case for the promises of feminism in understanding our transforming nature, the talk will address 'planetary intersectionality' as a prism to connect humans, Earth and metaphysics, as well as oppression, crisis, and impermanence.



## **Planetary Lecture #5 | Water as an Engineered Planetary Space by Prof. Dr. Klement Tockner**

Director General, Senckenberg Society for Nature Research



A lecture on how we need to carefully, and fundamentally, rethink future management strategies and support coordinated actions to reverse the decline of biodiversity in freshwaters. The lecture emphasized on the importance of hybrid approaches that manage freshwater as a crucial resource for human life support as well as highly valuable and diverse ecosystems.



## **Planetary Lecture #6 | Historical Paleoclimatology by Prof. Dr. Nicola Di Cosmo**

Princeton Institute for Advanced Studies



A lecture that illustrates some of the main questions confronting scientists and historians that have engaged in interdisciplinary projects, focusing in particular on how such “hybrid” research may contribute to larger conversations about climate and society in the age of the Anthropocene.



## Planetary Colloquia

The planetary colloquia take place at regular intervals and serve mainly for academic exchange. The Panel invites experts on a question with planetary relevance, who give [short] lectures from different [academic] perspectives. These impulses from different disciplines form the basis for a scientific discussion of the topic and thus promote interdisciplinary dialogue.

The planetary colloquia are designed as hybrid events: to take the conversation beyond the physical boundaries of Giessen and to make it more accessible. Afterwards, recordings of the events are uploaded on the Panel's YouTube channel. The colloquia have thus far engaged with the topics, **Perspectives on the Planetary, Perspectives on the Rights of "Nature" and The Sun: A Discovery.**

### Planetary Colloquium | Perspectives on the Planetary

The Panel in cooperation with the Planetary Thinking Working Group (Goethe University Frankfurt, Senckenberg, ISOE) and the Forschungskolleg Humanwissenschaften, organized the first planetary colloquium. In a digital atmosphere, around thirty participants from different academic backgrounds exchanged thoughts and ideas on the challenges facing our planet and the urgent need of inter- and transdisciplinary approaches in order to tackle them.



Planetary Colloquium | Perspectives on the Planetary on June 4, 2021 © Hanusch

## Planetary Colloquium | Perspectives on the Rights of "Nature"



In the face of the ongoing loss of biodiversity on the planet, more and more voices are calling for an entrenchment of solid rights of "nature" within Western legal systems. In our planetary colloquium, questions about whether, how, and why the planet's myriad animal, plant, microbial, and other inhabitants can shape human politics were debated on.

In his opening keynote "What rights does nature need?" sociologist Frank Adloff (University of Hamburg) traced the development of different conceptions of rights for animals, plants, and ecosystems while sociologist Doris Schweizer (Goethe University Frankfurt) raised concerns about the transferability of human conceptions of law to non-human "legal persons". Ecosystem researcher Emily Poppenborg Martin (JLU Giessen) followed by raising further doubts especially with regard to the nature-culture divide. Lawyer Franziska Johanna Albrecht (Green Legal Impact, Berlin) was able to show that rights of "nature" - however imperfect they may be - can serve as effective tools in terms of representing non-human interests.



From left to right - Liza Bauer, Frank Adloff, Emily Poppenborg Martin, Franziska Johanna Albrecht and Doris Schweizer lead the discussion on November 10, 2022 © Wiegand



## Planetary Colloquium | The Sun. A Discovery

We all consist of stardust. This often quoted insight of astrophysics establishes a connection between our own existence and our own home star, the sun. As almost all elements besides helium were born inside stars by nuclear fusion or were created when stars ended their life, we are dependent to the sun not only with respect to our material constitution but in practically all aspects of our life. For humanity, viewing and observing our sun has been an ever-renewed and reinterpreted discovery, sometimes leading to anthropocentric pride, sometimes to planetary humility.

Connected to the interdisciplinary publication project on the sun's history of discovery by Sibylle Anderl (see page 15), the colloquium brought together expert perspectives from various disciplines, such as solar system research, cultural studies, and art history.



Planetary Colloquium | The Sun. A Discovery on September 19, 2023 © Wiegand

In cooperation with Kinocenter Gießen, the Panel screens films of planetary relevance to the public and invites experts on relevant fields to conduct a lively discussion after the screening.

### **Oppenheimer (2023)**

(Directed by Christopher Nolan)

Discussion with Dr. Simon Märkl

Catholic University of Eichstätt-Ingolstadt

July 25, 2023

The Panel invited the moviegoers to the screening of Christopher Nolan's *Oppenheimer* to kick-off the Panel's Planetary CineScience series. Dr. Simon Märkl was invited as the guest for a film talk.

In his dissertation "Big Science Fiction", the cultural historian uses the example of nuclear fusion research in the USA to describe the complex relationship between science, politics and propaganda during the Cold War. Before the film, he gave a short introduction to the topic, which led to a productive and exciting discussion afterwards.



Dr. Simon Märkl introduces the movie to the crowd with a brief historical background  
© Wiegand

## Dark Waters (2023)

(Directed by Todd Haynes)

Discussion with Claus Leggewie

Panel on Planetary Thinking

September 26, 2023

Not only since the recently published General Update of Planetary Boundaries or the Forever Pollution Project, the chemical group of PFAS (Per- and polyfluoroalkyl substances), so-called “forever chemicals” and components of clothing, paint, cleaning agents, or packaging, has been controversial. In connection with these debates, Claus Leggewie led an insightful discussion following the movie screening.



Liza Bauer and Claus Leggewie giving an introduction to the movie © Muthuwahandi

## Mad Max: Fury Road (2015)

(Directed by George Miller)

Discussion with Meike Wiegand

Panel on Planetary Thinking

November 28, 2023

An apocalyptic world where a tyrant rules over a stark desert, controlling every drop of water. Two rebels, one escaping grief and the other reaching out to her childhood, are the last hope for a few. Following the movie screening, Meike Wiegand led a delightful discussion connecting the movie to the Panel's ongoing theme of the semester: planetary waters.

## 2001: A Space Odyssey (1968)

(Directed by Stanley Kubrick)

Discussion with Bert Rebhandl

Journalist & Film Critic

April 23-24, 2024

The final instalment of Planetary CineScience took filmgoers back in time to Stanley Kubrick's 1968 classic. The groundbreaking film has not only influenced our imagination but has also significantly contributed to shaping our perception of the Earth. It serves not only as an exemplary instance of how a film has profoundly altered the medium of cinema but also underscores the enduring capacity of films to shape and mold our planetary consciousness.

The film screening was followed by the discussion, "Cinema as a Planetary Medium" where renowned journalist & film critic Bert Rebhandl, Claus Leggewie & Meike Wiegand shed light on the interactions between film, humanity, and planets, thereby gaining new insights into our planetary existence.



## The Parliament for the Future

In collaboration with City Theatre Giessen, the Panel organizes a series of events under the headline “**The Parliament for the Future**” which kickstarted on September 25, 2023 with a refreshing lecture and discussion by Claus Leggewie [Director, Panel on Planetary Thinking] on the topic “Before practice comes theory, or: Who sits in the parliament of things?”. During the talk, he invited the guests to consider the idea of an expanded representation.

On 14.12.2023, Dr. Annette Voigt [University of Kassel] delivered the lecture on “Of wild boars and city pigeons: Experiences of people and animals living together in the city and innovative ideas for the future”. This was followed by another lecture on “Animal aided design” by Prof. Dr. Thomas E. Hauck [Studio Animal-Aided Design, Vienna University of Technology] on 12.02.2024.

A city walk in Giessen Philosophenwald and the Wieseck-Aue with Dr. Markus Dietz [Institute for Animal Ecology and Nature Education, Laubach] took place on 06.05.2024. The participants got to know through the example of bats and birds, the biodiversity that such green islands can harbor and how they enrich our living environment.

On 13.05.2024, a communal dinner was organized venturing beyond the familiar and reinterpreting regional cuisine in a vegan and resource-conscious way. The series will culminate in July 2024 with a parliamentary exercise. More information available on the theatre's [website](#).

Das Parlament für  
die Zukunft



## Planetary Portal

On September 21, 2023, the Panel in collaboration with the Planetary research program at the Berggruen Institute, a think tank based in Los Angeles launched the “Planetary Portal” on [planetaryportal.org](https://planetaryportal.org). The website shows the institutes, indigenous movements and prominent individuals that are working on or within a planetary framework. These include university research centers, independent research institutes, NGOs, and other organizations that approach policy, politics, and philosophy through a planetary lens.



Planetary Portal mapping the planetary thinking institutes around the world

## Planetary Library

The Planetary Library comprises of selected scientific and science related books on the topic of planetary thinking. A library catalogue can be found in the Online Public Access Catalogue (OPAC) [JUSTfind](#) of JLU. The books of the library can be viewed at the Hub of the Panel.

The books are categorized to the topics of Agency, Animals, Democracy, Earth, History, Infrastructure, Interplanetary, Outer Space, Planetary, Planets, Political Ecology, Politics, & Technosphere.



Planetary Library © Muthuwahandi

## 4.5 EXCURSIONS

### "Planetenlehrpfad" Hike

Marburg

April 26, 2022

The Panel's first excursion was a hike along "Planetenlehrpfad"; the world's first planetary trail for the blind and sighted. The astronomical dimensions of our solar system is mapped at a scale of 1:1 billion over a distance of 6 km, i.e. 1 m in the model corresponding to 1 million km in reality, with the earth shrinking to the size of a hazelnut. The hike was complemented with a Marburg city tour as a welcome to the 'Planetary Materials' summer fellows.



The group hiking along the world's first planetary trail © Bauer



## Field Work in the Rosbach City Forest

Rosbach vor der Höhe

April 8, 2022

The Panel and a small group of students headed to the Rosbach City Forest as the **Planetary Scholars & Artists in Residence Program** kickstarted - with the fieldwork resulting in collecting core samples from forty beech trees. In the course of her fellowship project "Tree Ring Reports on Forest Dieback", dendrochronologist Claudia Hartl investigated the vitality as well as the reactions of healthy as well as dying beech trees to draught events or extreme weather events. Thanks to the active support of Prof. Lea Schneider (Institute of Geography, JLU) as well as her students, ~12,000 tree rings found their way into Hartl's long-term study.

The team learned about the many applications of tree-ring research. These ranged from determining the origin of construction materials, dating and certifying works of art or musical instruments, to today's widespread research into tree species suitability or climatic change. The annual rings showcase how planetary phenomena, reaching from heat waves to world wars, materialize in locally specific and tangible manners.



Claudia Hartl inspecting a freshly drawn core from one of the beeches © Bauer

## Community Farm Day

Glabbacherhof

October 18, 2022



The group harvests the kale for lunch directly in the field © Wiegand

The kickoff event for the “Planetary Materials” fellow Claudia J. Ford’s workshop series **What Earth is Made of** took place as an excursion to Glabbacherhof farm. The farm functions as a teaching and research unit of the JLU in the field of organic farming to further develop sustainable concepts for organic farming.

The excursion served to rethink the human relationship to the earth and its materialities by combining diverse perspectives from applied fields, science, and the arts. The focus was on one of the most fundamental relationships between humans and the environment - namely food production and nutrition.

The group made a tour of the newly built dairy cattle research barn, where fully automated milking machines and a fully automated feeding and cleaning system are intended to enable both the study of climate gas emissions in organic farming as part of the “Green Dairy Project”.

Scientific presentations & discussions were held on various topics which included considerations on decision-making criteria for farmers in dealing with sustainable technologies, new approaches in agroforestry, and a plea for more care in agriculture. Dr. Philipp Weckenbrock also introduced the group to the farm’s on-site laboratory facilities.



Claudia J. Ford pleads for more care in agriculture © Wiegand



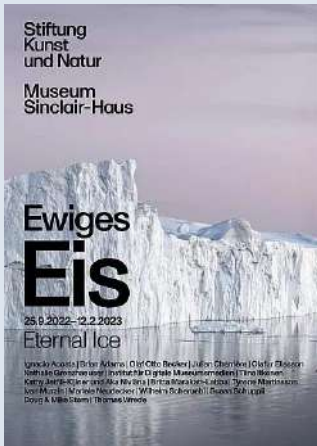
Philip Weckenbrock explains the experimental setup for analyzing the productivity of different agroforestry systems © Wiegand

## Exhibition “Eternal Ice”

Museum Sinclair-Haus, Bad Homburg vor der Höhe

October 27, 2022

The Panel visited the Sinclair-Haus to view the international exhibition “Eternal Ice”. The exhibition displayed selected works of contemporary artists who showcased the cultural, political, social and other interrelationships in light of the global ice melt; its effects on local indigenous communities and on the world climate as a whole.



Claudia Ford and Aravindi Muthuwahandi looking at the varieties of color shades ice can take © Bauer

## Exhibition “Clouds: From Gerhard Richter to the Cloud Art”

Museum Sinclair-Haus, Bad Homburg vor der Höhe

June 19, 2023

The Panel visited Museum Sinclair-Haus to see the exhibition “Clouds: From Gerhard Richter to the Cloud Art”. The exhibition fitted perfectly with the theme of the semester ‘Planetary Spaces’ and the projects of the fellows Adenike Oladosu and Jason Waite. The exhibit showcased how scientific methods and technology were incorporated into contemporary artistic explorations of clouds - both in the depiction of man-made clouds caused by pollution and natural variants of clouds.



The group poses at the entrance to the exhibition © Heck

## Exhibition “Plastic World”

Schirn Kunsthalle, Frankfurt

September 28, 2023

The Panel visited the Schirn Kunsthalle Frankfurt to view the exhibition “Plastic World”. The exhibition showed the history of plastics in the visual arts – from being celebrated as the eternal material, symbolizing progress and modernism to being the ultimate threat to the environment. The works of around 50 international artists were exhibited in the forms of installations, assemblages and documentaries.



L'arbre à palabres by Pascale Marthine Tayou © Schirn Kunsthalle Frankfurt



The group poses under a fascinating plastic sculpture © Schirn Kunsthalle Frankfurt

## Excursion through Bergwerkswald to Kletterwald Gießen

Giessen

June 13, 2024

As a farewell to the Planetary Times summer fellow Connor Cook, the Panel organized a hike through Giessen's Bergwerkswald that culminated in a visit to the forest adventure park Kletterwald Gießen. The team gained the opportunity to experience Giessen's forests from a new vantage point: jumping, climbing, and zip lining right below treetops. The park's complex structure of wire ropes, swings, ropeways and boardwalks not only emblemizes human impacts in forest ecosystems but also consolidates some of our semester's insights: Human-planet relationships are inseparable from the technologies we develop; our task is to build them in view of and respect for the more-than-human world.



Team at Kletterwald Gießen © K. Endres



## 4.6 FORTHCOMING EVENTS

### Planetary Scholars & Artists in Residence Program

#### **Planetary Times Window Exhibition**

by Aisling O'Carroll  
at Kunsthalle Giessen  
November 4-10, 2024

#### **Planetary Colloquium: Cryopolitics, Permafrost & De-Extinction**

by Charlotte Wrigley & Christian Kosmas Mayer  
November 26-27, 2024

#### **Planetary Times Winter Workshop**

#### **Reading the Rocks and Stars: Field Methods for Observing and Narrating Planetary Time**

by Aisling O'Carroll & Lukáš Likavčan  
November 28-29, 2024

#### **PROTOTYPING A PLANETARY DEMOCRACY**

**Fellowship on Planetary Agency & Planetary Politics**  
2025

#### **Final exhibition in collaboration with Kunsthalle Giessen**

by fellows of the Planetary Scholars & Artists in Residence Program  
2025

### The Parliament for the Future

#### **The Parliament of Animals**

Dramaturgic reading & parliamentary exercise  
at Stadttheater Gießen  
July 8, 2024



## 5. PUBLICATIONS

### Upcoming publications

Bauer, L. B.: *Livestock in the Laboratory of Literature. Postanimal Companion Species in Literary Thought Experiments*. Cham: Palgrave.

Bauer, L. B., Hanusch, F., Leggewie, C.: *Planetary Paradigm*. Cambridge: Cambridge University Press. [Open Access Cambridge Elements]

Hanusch, F.: Introduction, in Hanusch, F., Katsman, A. [eds.]: *Seeds for Democratic Futures*. Bielefeld: transcript.

Hanusch, F.: *Planetary Democracy*, in Hanusch, F., Katsman, A. [eds.]: *Seeds for Democratic Futures*. Bielefeld: transcript.

Hanusch, F.: *The United Times. A Thought Experiment for Planetary Law*, in Kotzé, L. [ed.]: *Law and Planet Earth - Exploring New Frontiers in Earth System Law*. Cambridge: Cambridge University Press.

Hanusch, F., Leggewie, C., Bauer, L. B.: *The Planetary Condition (Elements in Earth System Governance)*. Cambridge: Cambridge University Press.

Leggewie, C.: *Chittagong Schiffbruch. Visuelle Evidenzen zur Globalisierungskritik*. Leipzig: Spectorbooks.

Leggewie, C.: *Kosmo.Polis. Eine Revision*. München: C.H. Beck.

### Published work

#### 2023

Bauer, L. B., Finkelstein, C., Hanusch, F., Hartl, C., Kessler, M., Leggewie, C.: Introduction, in: Finkelstein, C., Hartl, C., Kessler, M. [eds.]: *Planetary Forest*. Berlin: DISTANZ Verlag. pp. 8-9.

Bauer, L. B., Hanusch, F., Leggewie, C.: *Planetary Forest Policy*, in: Finkelstein, C., Hartl, C., Kessler, M. [eds.]: *Planetary Forest*. Berlin: DISTANZ Verlag. pp. 73-75.

Hanusch, F.: *The Politics of Deep Time*. Cambridge: Cambridge University Press.

Hanusch, F., Leggewie, C.: *Agenda*, in: Wallenhorst, N., Wulf, C. (eds.): *Handbook of the Anthropocene*. Cham: Springer Nature. pp. 1577-1581.

Hanusch, F., Leggewie, C.: *Thought*, in: Wallenhorst, N., Wulf, C. (eds.): *Handbook of the Anthropocene*. Cham: Springer Nature. pp. 1577-1581.

Leggewie, C.: *Art. "Thought" and "Boundaries"*, in: Wallenhorst, N., Wulf, C. (eds.): *Handbook of the Anthropocene*. Cham: Springer Nature.

Leggewie, C.: *Die Ahnungslosigkeit gefährdet die Welt*. Review. *Sturmnomaden*. *Wie der Klimawandel uns Menschen die Heimat raubt* von Kira Vinke. *Taz*, 09.01.2023.

Leggewie, C.: *Die Konsultative. Mehr Demokratie durch Bürgerbeteiligung*. 5.Aufl. Berlin: Wagenbach.

## 2022

Bauer, L. B.: *Reading to Stretch the Imagination. Exploring 'Livestock' Animal Representations in Literary Thought Experiments*, in Andreas Hübner (ed.): *Multispecies Futures. New Approaches to Teaching Human-Animal Studies*. Berlin: Neofelis, pp. 95-114.

Hanusch, F., Bauer, L. B., Hartl, C., Finkelstein, C., Leggewie, C.: *Der Wald als Mitakteur? Das Fallbeispiel einer planetaren Politik*, in: *Politische Vierteljahresschrift*, 63, pp. 708 - 728.

Hanusch F., Meisch, S.: *The Temporal Cleavage: Climate Emergency vs. Populist Retrotopia*. *Environmental Politics* 31:5, pp. 883-903.

Leggewie, C.: *Eine bestimmte Idee von Freiheit. André Gorz zum 100.Geburtstag*, in *WestEnd, Neue Zeitschrift für Sozialforschung* H. 1/202; AS. pp. 185-201.

Leggewie, C.: *Reparationen. Im Dreieck Algerien, Frankreich, Deutschland*. Mainz: Verlag Donata Kinzelbach.

Leggewie, C.: Review. Das Klima der Geschichte im planetarischen Zeitalter von Dipesh Chakrabarty. Frankfurter Rundschau.

Leggewie, C.: Technocracy revisited? Rezension zu "Anpassung - Leitmotiv der nächsten Gesellschaft" von Philipp Staab. Soziopolis: Gesellschaft beobachten.

## 2021

Asenbaum, H., Hanusch, F.: [De] Futuring Democracy. Labs, Playgrounds, and Ateliers as Democratic Innovations. *Futures*. Volume 134, December 2021, 102836. DOI:10.1016/j.futures.2021.102836.

Bauer, L. B.: Eating Kin or Making Kin? Farm Animal Representations in Twenty-First Century Fiction, in: Nünning, A. and Scherr, A. (eds.). *Literature & Literary Studies in the 21st Century: Cultural Concerns – Concepts – Case Studies*. Trier: WVT.

Bauer, L. B.: Introduction: Ecocriticism and Narrative Form. *SubStance* 50.3: pp. 3-13.

Bauer, L. B.: Mit anderen Tieren leben. Lernen an der Schnittstelle zwischen fiktiven Tiertexten, lebendigen Tieren und tierethischen Bestrebungen." In: Simone Horstmann (ed.): *Interspezies Lernen: Grundlinien interdisziplinärer Tierschutz- und Tierrechtsbildung*. Bielefeld: Transcript.

Hanusch, F.: Embeddedness as a Quality Assessment Tool for Teaching-Learning Processes. *HINT. Heidelberg Inspirations for Innovative Teaching*.

Hanusch, F., Becker, R.: Demokratie und Klimawandel. *Demokratie Gegen Menschenfeindlichkeit*, 5:2, pp. 18–21.

Hanusch, F., Leggewie, C., Meyer, E.: *Planetar denken. Ein Einstieg*. Bielefeld: transcript.

Hanusch, F., Schad, M.: Hydrogen Research: Technology First, Society Second? *GAIA – Ecological Perspectives for Science and Society*. 2/2021. *GAIA*. 30:2, pp. 82-86.

Leggewie, C.: In Place of an Afterword. Report from an Ongoing Self-experiment. in: Schwedes/Keichel (Hgs.) *The Electric Car. Mobility of Upheaval*, Wiesbaden: Springer, pp. 141-144. [Open Access]

Leggewie, C.: Neues vom Grand Hotel Abgrund. Der Paradigmenwechsel vom Kosmopolitismus zur Kosmo-Politik, in: *Zeitschrift für Vergleichende Politikwissenschaft* 15, pp. 119–136. [OpenAccess]

Leggewie, C.: Ouaisa, R. Algerien: Das Ancien Régime vor der Implosion? *Blätter* 66:7, pp. 33-36.

Leggewie, C.: Quivive: Der Kuss des Bären und die Lehren der Ungewissheit, in: *MerkurHeft* 868, September 2021, 75. Jahrgang, S. pp. 74-78.

Leggewie, C., Lenger, F.: Reformunfähigkeit des Kapitalismus? Zur Möglichkeit eines Green New Deal, in Shalini Randeria (Hg.), *Kapitalismus im 21. Jahrhundert*, Passagen: Wien. pp. 117-140.

Leggewie, C., Kübler, L., Nanz, P.: Demokratische Innovation durch Bürgerräte. In: *APuZ* 26/27.

## **2020**

Hanusch, F.: Demokratie und Klimawandel, in *Demokratie gegen Menschenfeindlichkeit*, 5:1, 18-21.

Hanusch, F., Biermann, F.: Deep-time Organizations: Learning Institutional Longevity from History. *The Anthropocene Review*, 7:1, pp. 19–41.

Leggewie, C.: BRÜDER, ZUR SONNE. Wie das Wettrennen ins All die planetare Achtsamkeit bestärkte, in: *Lettre International* 129, pp. 60-63.

## 2024

Jevsenak, J., Hartl, C. et al.: Incorporating High-resolution Climate, Remote Sensing and Topographic Data to Map Annual Forest Growth in Central and Eastern Europe. *Science of the Total Environment*, Volume 913, 169692, ISSN 0048-9697.

Waite, J.: Listen to the City Contesting Urban Necropolitics Against Disability: The Case of the 2017 Pohang Earthquake in South Korea and Its Aftermath Through the Project No One Left Behind. *FIELD*, 27.

## 2023

Castro-Campos, B.: Investigating the Moral Nuances of Nature: A Multisensory Exploration Through the Anthropogenic Urban Woodland. *EASST Review*, 42:1.

Finkelstein, C.: Seismic Colonialism, Architecture and the Triangulation of the World. The Samoa Geophysical Observatory at Apia [1902-1914]. In Falser, M. (ed.): *German-colonial Building Cultures: A Global Architectural History in 100 Visual Primary Sources*. Central Institute for Art History: Munich, pp. 58-61. Passau: Klinger.

Finkelstein, C., Hartl, C., Kessler, M. (eds): *Planetary Forest*. Berlin: DISTANZ Verlag.

Finkelstein, C., Morley, M.: *The Unheard Symphony of the Planet*. The New York Times. [Data collection in context with the Planetary Materials Fellowship].

Kuhl, E., Zang, C., Esper, J., Riechelmann, D., Büntgen, U., Briesch, M., Reinig, F., Römer, P., Konter, O., Schmidhalter, M., Hartl, C.: Using Machine Learning on Tree-ring Data to Determine the Geographical Provenance of Historical Construction Timbers. *Ecosphere* 14:3, e4453.

Kunz, M., Esper, J., Kuhl, E., Schneider, L., Büntgen, U., Hartl, C.: Combining Tree-ring Width and Density to Separate the Effects of Climate Variation and Insect Defoliation. *Forests* 14:7, 1478.

Waite, J.: 14th Gwangju Biennale, “soft and weak like water”. e-flux.

Waite, J.: Bontaro Dokuyama's 'Even After 1,000 Years. Burlington Contemporary.

Waite, J.: The Most Important Network of Art Institutions that You've Never Heard of. ArtReview.

Pacheco Bejarano, J. P.: Wet Reader. Jan van Eyck Academie: Maastricht. [Produced in context with the Planetary Scholars Artists in Residence Program on "Planetary Spaces" in winter 2023]

## **2022**

Finkelstein, C.: Environmental Control: Seismicity as Design Technique in Wilhelmine Germany. Doc Talks x MoMa [New York City].

Finkelstein, C.: Vibrascapes: Contact Zones and Planetary Media. koozArch, Milan Design Week. [Data collection Planetary Materials Fellowship]

Finkelstein, C.: Planetary Disequilibrium. e-flux Architecture [Sick Architecture series] [Data collection Planetary Materials Fellowship]

Hartl, C., Schneider, L.: NOAA/WDS Paleoclimatology - Hartl - Rossbach vor der Höhe 1 - FASY - ITRDB DEU338. [Data collection Planetary Materials Fellowship]

Hartl, C., Schneider, L.: NOAA/WDS Paleoclimatology - Hartl - Rossbach vor der Höhe 2 - FASY - ITRDB DEU339. [Data collection Planetary Materials Fellowship]

Pauls, C., Oppelt, M., Weber, Nicki K., Huni Kui, N. I., Leggewie, C., Hanusch, F., Bauer, L. B., Hartl, C., Finkelstein, C., Chakrabarty, D., Mendoza, B., Schreurs, M.: Das Planetarische Politisch(e) Denken. Political Quarterly Journal/German Political Science Quarterly. 63:4, pp. 703-728.

## 6. PANEL IN THE MEDIA

**13.05.2024**

Loblied auf die Fledermaus. Gießener Anzeiger.

**25.04.2024**

Einblicke in eine zukünftige Realität. Gießener Anzeiger.

**08.03.2024**

Planetare Demokratie: Einbezug der Nichtmenschlichen. Interview with Frederic Hanusch. Die Furche, Austria.

**27.09.2023**

"Eine Stimme für die anderen: Diskussions- und Vortragsreihe »Das Parlament der Zukunft« im Stadttheater eröffnet". Gießener Anzeiger.

**21.03.2023**

Diez, G.: "Planetare Politik: Wir müssen unsere Weltsicht fundamental ändern." Zeit-Online.

**15.03.2023**

"How can we think like a planet? Political scientist Frederic Hanusch in an interview about planetary thinking and what it has to do with our democracy". Futurium, Berlin.

**06.03.2023**

Leggewie, C.: Bleibt der Erde treu! Rezension zu "Geosozologie. Die Erde als Raum des Lebens" von Markus Schroer. Soziopolis.

**22.02.2023**

Leggewie, C.: Exilierte Akademiker: Die wissenschaftliche Gemeinschaft hat ihre Tücken, Frankfurter Allgemeine.

**02.02.2023**

Leggewie, C.: Exilierte Akademiker. Die wissenschaftliche Gemeinschaft hat ihre Tücken. Frankfurter Allgemeine Zeitung.

**23.01.2023**

Bauer, L. B.: Podcast: Knowing Animals. Teaching Literary Animals Studies.

**03.01.2023**

"Der Blick aufs "große Ganze". Gießener Anzeiger.

**16.12.2022**

"Internationale Gäste erschließen planetare Räume. Planetary Scholars & Artists in Residence Program: Innovatives Stipendienprogramm der Universität Gießen für Tandems aus Wissenschaft und Kunst steht 2023 unter dem Motto 'Planetary Spaces' – Reflexive Forschung zur Nachhaltigkeit." Press release, Justus Liebig University Giessen.

**17.11.2022**

Hanusch, F.: Scobel – Zukunft gestalten. Live Sendung auf 3Sat.

**08.11.2022**

Leggiewie, C.: Eigener Koordinator für Raumfahrt. Frankfurter Allgemeine Zeitung.

**27.06.2022**

"Störungsfläche« und Denkanstoß. Der »Planetary Forest« im Botanischen Garten." Gießener Allgemeine.

**26.06.2022**

"Kunst und »fremde« Natur." Gießener Allgemeine.

**14.06.2022**

"Waldkunst für den Botanischen Garten." Gießener Allgemeine.

**11.04.2022**

"Planetare Materialien – Denkanstöße zu einem neuen Blick auf unseren Planeten Erde. Innovatives Stipendienprogramm Planetary Scholars and Artists in Residence gestartet." Press release, Justus Liebig University Giessen.



**03.03.2022**

"Anderer Blick auf den Planeten." Gießener Anzeiger.

**11.09.2021**

Wir leben nicht auf einem Planeten, wir sind Teil von ihm. Interview mit Frederic Hanusch über planetares Denken in den Wissenschaften. L.I.S.A. Gerda Henkel Stiftung Wissenschaftsportal.

**14.08.2021**

Leggewie, C. Und es wurde Licht? taz am Wochenende.

**25.07.2021**

Leggewie, C. Gabentausch – Zur Idee eines Homo Cooperativus. Deutschlandfunk.

**19.06.2021**

Leggewie, C. Wie man keine Revolution macht. Buchrezension, taz am Wochenende.

**07.06.2021**

Leggewie, C.; Quaissa, R. Angst vor neuen Monstern. IPG Journal.

**12.01.2021**

Leggewie, C. „Du bist zurück. Und jetzt“ Dana Rangas Gedichte kommen fast prosaisch daher – und sind doch planetarische Poesie, in: Berliner Zeitung, Feuilleton, 15.

**29.09.2020**

Hanusch, F., Leggewie, C.: Planetares Denken: Über Demokratie und Nachhaltigkeit. Podcast mit Hessen schafft Wissen. 05.08.2020 Hanusch, F., Leggewie, C.: Einstieg ins planetare Denken, in: Frankfurter Allgemeine Zeitung.

**10.08.2020**

Hanusch, F., Leggewie, C.: Einstieg ins planetare Denken, in: Frankfurter Allgemeine Zeitung.



Panel on Planetary Thinking  
Liebigstrasse 35  
35392 Giessen  
☎ +49 641 99-16191  
[panel@planet.uni-giessen.de](mailto:panel@planet.uni-giessen.de)



Cover image: Scandinavia at Night © NASA

This report was compiled and designed by Aravindi Muthuwahandi in May 2024.