

## CONTACT AND ADVICE



### STUDENT HOTLINE CALL JUSTUS

🕒 Mo to Fr 8.30-12.00, 13.00-17.00 | ☎ +49 641 99 16400

### CENTRAL STUDENT ADVISORY SERVICE

Goethestr. 58, 35390 Giessen | ✉ ZSB@uni-giessen.de

Open consultation hours (short consultation without registration)

🕒 Mon and Fri 9.00-12.00, Tue and Thu 15.00-17.00

Telephone consultation hours

🕒 Mon, Tue and Thu 13.00-15.00

☎ +49 641 99 16223 (via Call Justus)

➔ [www.uni-giessen.de/studium/zsb](http://www.uni-giessen.de/studium/zsb)

### INTERNATIONAL OFFICE

Goethestr. 58, 35390 Giessen

☎ +49 641 99 12143 | +49 641 99 12174

✉ studium-international@uni-giessen.de

➔ [www.uni-giessen.de/international-pages](http://www.uni-giessen.de/international-pages)

### ACADEMIC ADVICE

Prof. Dr. Ramona Teuber

Department of Agricultural Policy and Market Research

☎ +49 641 99 37020 | ✉ Ramona.Teuber@agrar.uni-giessen.de

Central Study Advisor (JLU): Anja Staffler (Dipl. oec.troph.)

### FACULTY 09 - AGRICULTURAL SCIENCES, NUTRITIONAL SCIENCES, AND ENVIRONMENTAL MANAGEMENT

➔ [www.uni-giessen.de/f09](http://www.uni-giessen.de/f09)

## APPLICATION

### ADMISSION REQUIREMENTS:

GENERAL UNIVERSITY ENTRANCE QUALIFICATION, ADVANCED TECHNICAL COLLEGE ENTRANCE QUALIFICATION OR EQUIVALENT DEGREE; BACHELOR'S DEGREE IN A RELEVANT FIELD OF STUDY

4	SEMESTERS – 120 CREDIT POINTS (CP)
WS	START IN THE WINTER SEMESTER (OCTOBER)
LA	LANGUAGE REQUIREMENTS
TR	TECHNICAL REQUIREMENTS

Application deadline: 15 July

JLU application portal:

➔ [www.uni-giessen.de/studium/bewerbung](http://www.uni-giessen.de/studium/bewerbung)



All applicants with a foreign university entrance certificate or a foreign bachelor's degree must submit their application via:

➔ [www.uni-assist.de](http://www.uni-assist.de)

No study fees are charged for this study programme. However, students have to pay a semester contribution for administration.

For further information you may contact:

Registrar's Office

Goethestr. 58, 35390 Giessen

Postal address: Postfach 11 14 40, 35359 Giessen

☎ +49 641 99 16400 (via Call Justus)

✉ [international.admission@admin.uni-giessen.de](mailto:international.admission@admin.uni-giessen.de)



### FURTHER INFORMATION

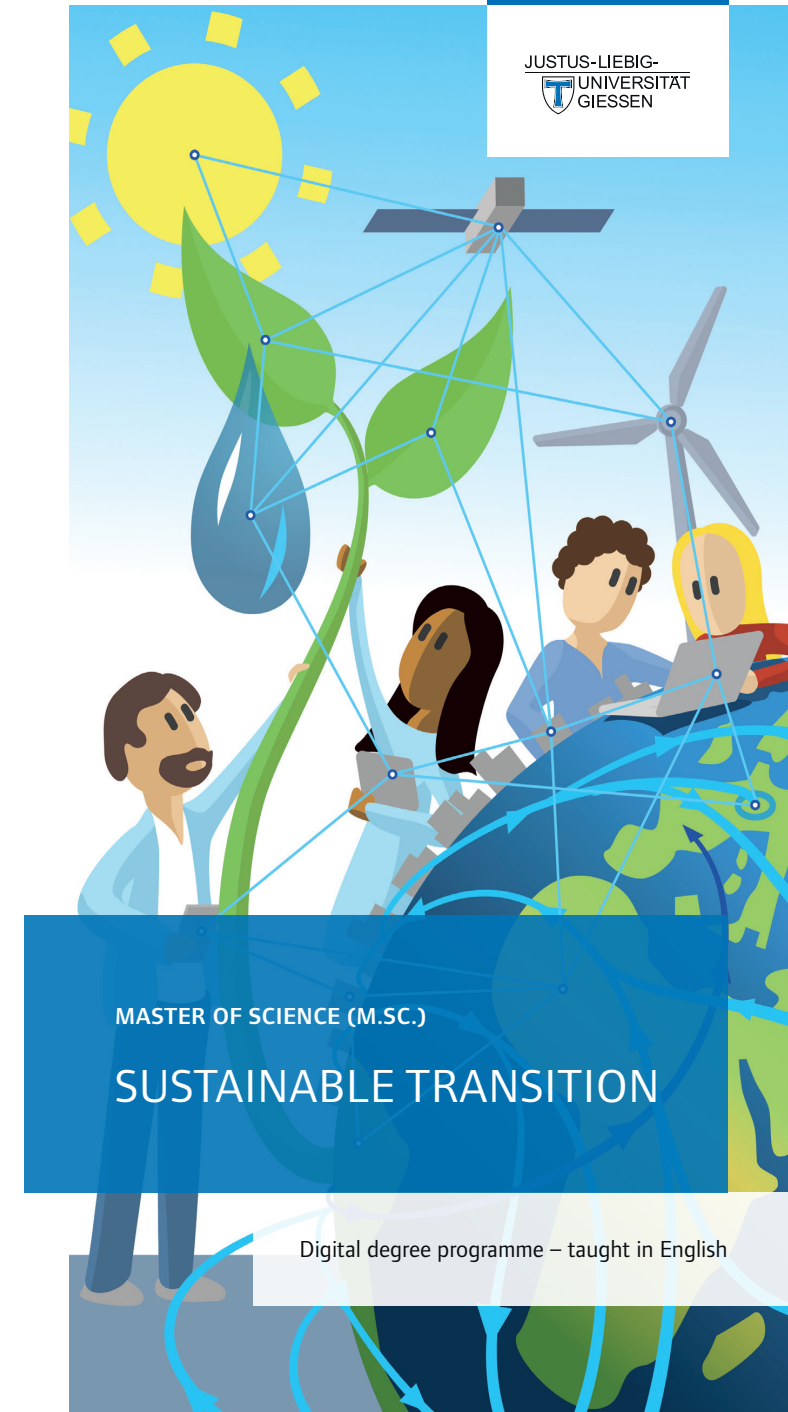
➔ [www.uni-giessen.de/studium/sustainable-transition](http://www.uni-giessen.de/studium/sustainable-transition)



# JLU

NEUE WEGE. SEIT 1607.

JUSTUS-LIEBIG-  
UNIVERSITÄT  
GIESSEN



MASTER OF SCIENCE (M.SC.)

## SUSTAINABLE TRANSITION

Digital degree programme – taught in English



Social changes towards sustainability are increasingly inevitable and such a relevant topic that we decided to create our study programme M.Sc. Sustainable Transition with a global perspective. It is a digital study programme and designed for qualified international students who are not able to participate in a study course with physical presence in Germany.

## WHAT MAKES US SPECIAL

Justus Liebig University (JLU) offers a completely digital study programme for students all over the world. In fact, all courses and exams can be taken remotely. Physical presence in Germany is possible but not necessary.

### Summer School

Several profile modules are offered as block modules with physical attendance in Giessen in form of summer schools. These modules are optional.

## ADMISSION REQUIREMENTS

- A bachelor's degree with at least 180 ECTS credits in agriculture, nutrition, natural or environmental sciences, economics, or political science.
- Proof of English language proficiency: TOEFL score of at least 550 (PBT), 213 (CBT), 80 (iBT) or IELTS score of at least 6 (Academic Training)

## TECHNICAL REQUIREMENTS

Students have to work with e-learning systems and need to process comprehensive information and data. Therefore, we expect the following technical requirements:

- Reliable internet connection,
- Computer with sufficient screen size (about 15 inches), camera and headset;

Please refrain from studying with only a smartphone.

## COMPOSITION OF THE STUDY PROGRAMME

Our modules offer a wide spectrum of different teaching methods including synchronous online teaching such as lectures, seminars and group discussion as well as asynchronous elements such as videos and individual work tasks. Students complete each module with a final examination and the individual module grades determine the final grade of the entire study programme.

The programme schedule consists of eleven mandatory modules (core modules), five optional modules (profile modules), and the Master's Thesis.

### Core Modules (Mandatory Courses)

- Applied Statistics (6 CP)
- Theory and Practice of Economic Development (6 CP)
- Global Food Markets (6 CP)
- Sustainable Food Systems (6 CP)
- International Economics (6 CP)
- Climate Change and Development (6 CP)
- Resource Economics, Sustainability & Environmental Management (6 CP)
- Renewable Energy Transition (6 CP)
- Natural Resources and Ecosystem Services (6 CP)
- Food Politics (6 CP)
- Scientific Working and Writing (6 CP)

### Profile Modules

Students tailor their individual profile by selecting five modules from the catalogue for digital degree programmes.

## CAREER OPTIONS

Globally, there is a high need for skilled people dealing with social transformation processes on a scientific basis and sustainably shaping those.

This study programme qualifies for working in areas that are closely related to sustainable transition processes in agricultural and food systems, i.e. working to achieve the Sustainable Development Goals (SDGs).

Our graduates work in leading positions such as executive managers and consultants in private business, public authorities, governmental and non-governmental organizations.

Moreover, the graduation also allows starting a career as a (junior) scientist at universities and non-university research institutions.

## ORGANISATIONAL ISSUES

- General Regulations for modularised and multi-stage study programmes at JLU (English Version for informative purposes. Only the German version of the modules is official and legally binding.)  
↳ [www.uni-giessen.de/mug/7/7\\_34\\_00\\_1\\_engl](http://www.uni-giessen.de/mug/7/7_34_00_1_engl)
- Examination Regulations of Faculty 09  
↳ [www.uni-giessen.de/faculties/f09/studies/examinations-and-doctorate/topic/comreg](http://www.uni-giessen.de/faculties/f09/studies/examinations-and-doctorate/topic/comreg)
- Module Directory  
↳ [www.uni-giessen.de/faculties/f09/studies/msc/module-directories](http://www.uni-giessen.de/faculties/f09/studies/msc/module-directories)