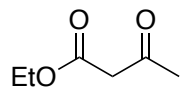


# Synthesis Challenge 87

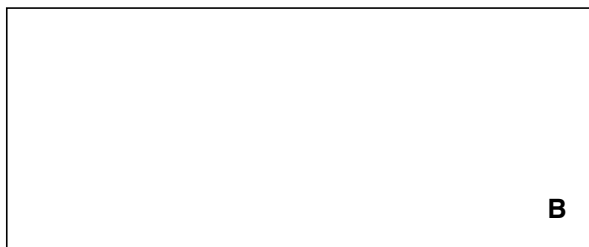
AG Wegner

24.06.2020



**A**

1-5



**B**

6-8



**C**

9-10

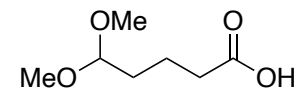


**D**

- 1) NaBH<sub>4</sub>
- 2) TBSCl, ImH
- 3) DiBALH
- 4) EtO<sub>2</sub>CCH<sub>2</sub>PO(OEt)<sub>2</sub>, NaH
- 5) DiBALH

- 6) Ti(O-*i*Pr)<sub>4</sub>, (-)-DIPT, *t*BuOOH, 4 Å MS, CH<sub>2</sub>Cl<sub>2</sub>, -15°C
- 7) I<sub>2</sub>, ImH
- 8) Zn, NaI

- 9) I, DCC, DMAP, CH<sub>2</sub>Cl<sub>2</sub>
- 10) LDA, HMPA, TBSCl; then MeOH, THF, -78°C to 0°C



**I**

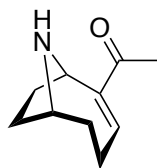
11-12  
↓



13-14  
↓



15-16  
↓  
\* HCl



11)  $(\text{PhO})_2\text{PON}_3$ ,  $i\text{Pr}_2\text{NEt}$ ;  $\text{NaOSiMe}_3$   
12)  $\text{TsCl}$ ,  $i\text{Pr}_2\text{NEt}$

13)  $\text{CSA}$ ,  $\text{MeOH}$ ;  $\text{TEMPO}$ ,  $\text{PhI}(\text{OAc})_2$ ,  $\text{CH}_2\text{Cl}_2$   
14)  $\text{DBU}$ ,  $\text{PhH}$ ,  $23^\circ\text{C}$

14) **II**,  $\text{Me}_3\text{SiOTf}$ ,  $\text{MeCN}$ ,  $-20^\circ\text{C}$   
15)  $(\text{HOCH}_2)_2$ ,  $\text{PPTS}$ ,  $\text{PhH}$ ,  $80^\circ\text{C}$ ;  
 $\text{Mg}$ ,  $\text{MeOH}$ ,  $23^\circ\text{C}$ ;  $3\text{ M HCl}$ ,  $23^\circ\text{C}$

